

Product Information

Size:

50ug

Reactivity:

Human

Source:

Rabbit

Isotype:

IgG

Applications:

ELISA, WB, IF

Recommended dilutions:

ELISA:1:2000-1:10000, WB:1:500-1:5000,
IF:1:200-1:500

Protein Background:

Probably plays a specific functional role in the rods and/or cones of photoreceptors. It may be the enzyme involved in the resynthesis of cGMP required for recovery of the dark state after phototransduction.

Gene ID:

GUCY2D

Uniprot

Q02846

Synonyms:

Retinal guanylyl cyclase 1 (RETGC-1) (EC 4.6.1.2) (Guanylate cyclase 2D, retinal) (Rod outer segment membrane guanylate cyclase) (ROS-GC), GUCY2D, CORD6 GUC1A4 GUC2D RETGC RETGC1

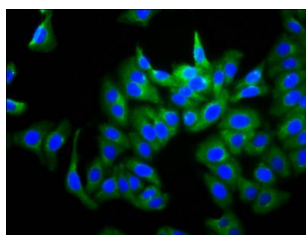
Immunogen:

Recombinant Human Retinal guanylyl cyclase 1 protein (362-462AA).

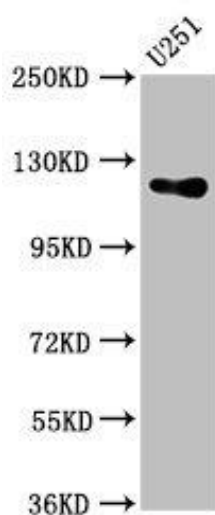
Storage:

Preservative: 0.03% Proclin 300. Constituents: 50% Glycerol, 0.01M PBS, pH 7.4

Product Images



Immunofluorescence staining of HepG2 cells with PACO59732 at 1:266, counter-stained with DAPI. The cells were fixed in 4% formaldehyde, permeabilized using 0.2% Triton X-100 and blocked in 10% normal Goat Serum. The cells were then incubated with the antibody overnight at 4°C. The secondary antibody was Alexa Fluor 488-conjugated AffiniPure Goat Anti-Rabbit IgG(H+L).



Western Blot. Positive WB detected in: U251 whole cell lysate. All lanes: GUCY2D antibody at 5.4µg/ml. Secondary. Goat polyclonal to rabbit IgG at 1/50000 dilution. Predicted band size: 121 kDa. Observed band size: 121 kDa.