

LRIG2 Antibody



PACO59780

Product Information

Size:

50ug

Reactivity:

Human

Source:

Rabbit

Isotype:

IgG

Applications:

ELISA, WB, IF

Recommended dilutions:

ELISA:1:2000-1:10000, WB:1:500-1:5000,
IF:1:50-1:200

Protein Background:

Gene ID:

LRIG2

Uniprot

O94898

Synonyms:

Leucine-rich repeats and immunoglobulin-like domains protein 2 (LIG-2), LRIG2, KIAA0806 LIG2

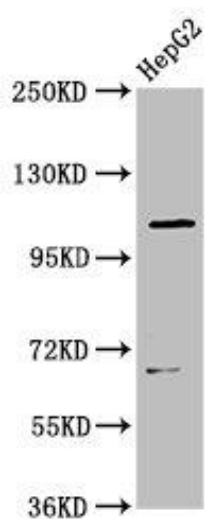
Immunogen:

Recombinant Human Leucine-rich repeats and immunoglobulin-like domains protein 2 protein (833-932AA).

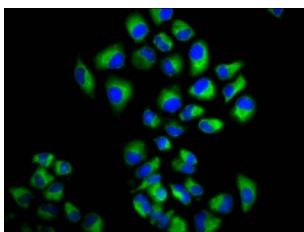
Storage:

Preservative: 0.03% Proclin 300. Constituents: 50% Glycerol, 0.01M PBS, pH 7.4

Product Images



Western Blot. Positive WB detected in: HepG2 whole cell lysate. All lanes: LRIG2 antibody at 3.5 μ g/ml. Secondary. Goat polyclonal to rabbit IgG at 1/50000 dilution. Predicted band size: 119 kDa. Observed band size: 119 kDa.



Immunofluorescence staining of HeLa cells with PACO59780 at 1:166, counter-stained with DAPI. The cells were fixed in 4% formaldehyde, permeabilized using 0.2% Triton X-100 and blocked in 10% normal Goat Serum. The cells were then incubated with the antibody overnight at 4°C. The secondary antibody was Alexa Fluor 488-conjugated AffiniPure Goat Anti-Rabbit IgG(H+L).