

# OPN1MW Antibody



PACO59824

---

## Product Information

**Size:**

50ug

**Reactivity:**

Human

**Source:**

Rabbit

**Isotype:**

IgG

**Applications:**

ELISA, WB, IF

**Recommended dilutions:**

ELISA:1:2000-1:10000, WB:1:500-1:5000,  
IF:1:50-1:200

**Protein Background:**

Visual pigments are the light-absorbing molecules that mediate vision. They consist of an apoprotein, opsin, covalently linked to cis-retinal.

**Gene ID:**

OPN1MW

**Uniprot**

P04001

**Synonyms:**

Medium-wave-sensitive opsin 1 (Green cone photoreceptor pigment) (Green-sensitive opsin) (GOP), OPN1MW, GCP

**Immunogen:**

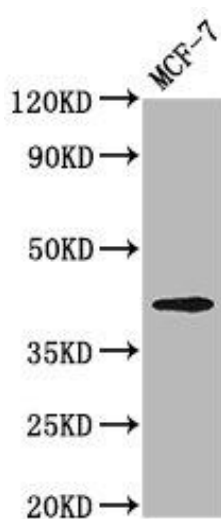
Recombinant Human Medium-wave-sensitive opsin 1 protein (1-52AA).

**Storage:**

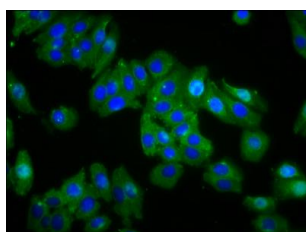
Preservative: 0.03% Proclin 300. Constituents: 50% Glycerol, 0.01M PBS, pH 7.4

## Product Images

---



Western Blot. Positive WB detected in: MCF-7 whole cell lysate. All lanes: OPN1MW antibody at 3.2 $\mu$ g/ml. Secondary. Goat polyclonal to rabbit IgG at 1/50000 dilution. Predicted band size: 41 kDa. Observed band size: 41 kDa.



Immunofluorescence staining of HepG2 cells with PACO59824 at 1:66, counter-stained with DAPI. The cells were fixed in 4% formaldehyde, permeabilized using 0.2% Triton X-100 and blocked in 10% normal Goat Serum. The cells were then incubated with the antibody overnight at 4°C. The secondary antibody was Alexa Fluor 488-conjugated AffiniPure Goat Anti-Rabbit IgG(H+L).