

# UMODL1 Antibody



PACO59932

---

## Product Information

**Size:**

50ug

**Reactivity:**

Human, Mouse

**Source:**

Rabbit

**Isotype:**

IgG

**Applications:**

ELISA, WB, IHC, IF

**Recommended dilutions:**

ELISA:1:2000-1:10000, WB:1:500-1:5000,  
IHC:1:200-1:500, IF:1:50-1:200

**Protein Background:****Gene ID:**

UMODL1

**Uniprot**

Q5DID0

**Synonyms:**

Uromodulin-like 1 (Olfactorin), UMODL1

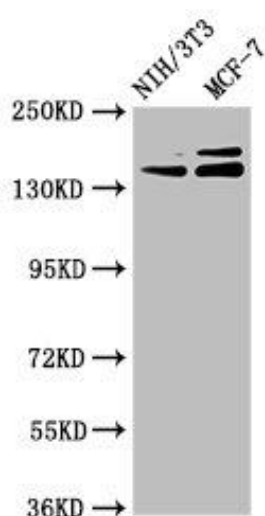
**Immunogen:**

Recombinant Human Uromodulin-like 1 protein (537-654AA).

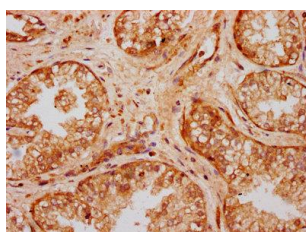
**Storage:**

Preservative: 0.03% Proclin 300. Constituents: 50% Glycerol, 0.01M PBS, pH 7.4

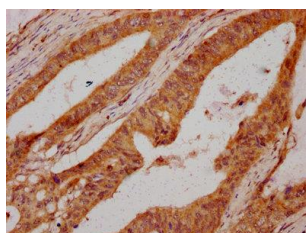
## Product Images



Western Blot. Positive WB detected in: NIH/3T3 whole cell lysate, MCF-7 whole cell lysate. All lanes: UMODL1 antibody at 5.1µg/ml. Secondary. Goat polyclonal to rabbit IgG at 1/50000 dilution. Predicted band size: 145, 157, 137, 150 kDa. Observed band size: 145, 157 kDa.



IHC image of PACO59932 diluted at 1:300 and staining in paraffin-embedded human prostate cancer performed on a Leica Bond™ system. After dewaxing and hydration, antigen retrieval was mediated by high pressure in a citrate buffer (pH 6.0). Section was blocked with 10% normal goat serum 30min at RT. Then primary antibody (1% BSA) was incubated at 4°C overnight. The primary is detected by a biotinylated secondary antibody and visualized using an HRP conjugated SP system.



IHC image of PACO59932 diluted at 1:300 and staining in paraffin-embedded human colon cancer performed on a Leica Bond™ system. After dewaxing and hydration, antigen retrieval was mediated by high pressure in a citrate buffer (pH 6.0). Section was blocked with 10% normal goat serum 30min at RT. Then primary antibody (1% BSA) was incubated at 4°C overnight. The primary is detected by a biotinylated secondary antibody and visualized using an HRP conjugated SP system.