

PACO59972

Product Information

Size:

50ug

Reactivity:

Human

Source:

Rabbit

Isotype:

IgG

Applications:

ELISA, IF

Recommended dilutions:

ELISA:1:2000-1:10000, IF:1:50-1:200

Protein Background:

Extremely potent competitive inhibitor of cAMP-dependent protein kinase activity, this protein interacts with the catalytic subunit of the enzyme after the cAMP-induced dissociation of its regulatory chains.

Gene ID:

PKIG

Uniprot

Q9Y2B9

Synonyms:

cAMP-dependent protein kinase inhibitor gamma (PKI-gamma), PKIG

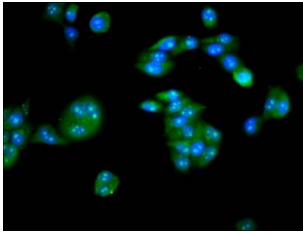
Immunogen:

Recombinant Human cAMP-dependent protein kinase inhibitor γ protein (1-76AA).

Storage:

Preservative: 0.03% Proclin 300. Constituents: 50% Glycerol, 0.01M PBS, pH 7.4

Product Images



Immunofluorescence staining of PC-3 cells with PACO59972 at 1:133, counter-stained with DAPI. The cells were fixed in 4% formaldehyde, permeabilized using 0.2% Triton X-100 and blocked in 10% normal Goat Serum. The cells were then incubated with the antibody overnight at 4°C. The secondary antibody was Alexa Fluor 488-conjugated AffiniPure Goat Anti-Rabbit IgG(H+L).