

IBA57 Antibody



PACO60092

Product Information

Size:

50ug

Reactivity:

Human, Mouse

Source:

Rabbit

Isotype:

IgG

Applications:

ELISA, WB, IHC, IF

Recommended dilutions:

ELISA:1:2000-1:10000, WB:1:500-1:5000,
IHC:1:200-1:500, IF:1:50-1:200

Protein Background:

Involved in the maturation of mitochondrial 4Fe-4S proteins functioning late in the iron-sulfur cluster assembly pathway.

Gene ID:

IBA57

Uniprot

Q5T440

Synonyms:

Putative transferase CAF17, mitochondrial (EC 2.1) (Iron-sulfur cluster assembly factor homolog), IBA57, C1orf69

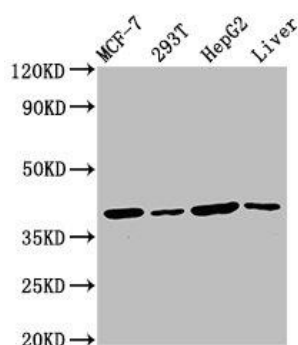
Immunogen:

Recombinant Human Putative transferase CAF17, mitochondrial protein (286-356AA).

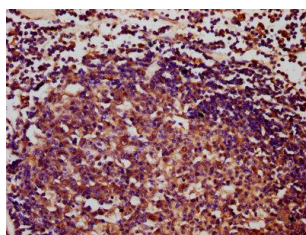
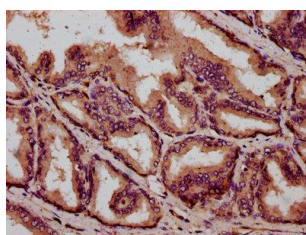
Storage:

Preservative: 0.03% Proclin 300. Constituents: 50% Glycerol, 0.01M PBS, pH 7.4

Product Images



Western Blot. Positive WB detected in: MCF-7 whole cell lysate, 293T whole cell lysate, HepG2 whole cell lysate, Mouse liver tissue. All lanes: IBA57 antibody at 4.5 μ g/ml. Secondary. Goat polyclonal to rabbit IgG at 1/50000 dilution. Predicted band size: 39 kDa. Observed band size: 39 kDa.



IHC image of PACO60092 diluted at 1:400 and staining in paraffin-embedded human prostate tissue performed on a Leica BondTM system. After dewaxing and hydration, antigen retrieval was mediated by high pressure in a citrate buffer (pH 6.0). Section was blocked with 10% normal goat serum 30min at RT. Then primary antibody (1% BSA) was incubated at 4°C overnight. The primary is detected by a biotinylated secondary antibody and visualized using an HRP conjugated SP system.

IHC image of PACO60092 diluted at 1:400 and staining in paraffin-embedded human lymph node tissue performed on a Leica BondTM system. After dewaxing and hydration, antigen retrieval was mediated by high pressure in a citrate buffer (pH 6.0). Section was blocked with 10% normal goat serum 30min at RT. Then primary antibody (1% BSA) was incubated at 4°C overnight. The primary is detected by a biotinylated secondary antibody and visualized using an HRP conjugated SP system.