

SCUBE1 Antibody



PACO60208

Product Information

Size:

50ug

Reactivity:

Human

Source:

Rabbit

Isotype:

IgG

Applications:

ELISA, IF

Recommended dilutions:

ELISA:1:2000-1:10000, IF:1:50-1:200

Protein Background:

Could function as an adhesive molecule and its matrix bound and soluble fragments may play a critical role in vascular biology.

Gene ID:

SCUBE1

Uniprot

Q8IWY4

Synonyms:

Signal peptide, CUB and EGF-like domain-containing protein 1, SCUBE1

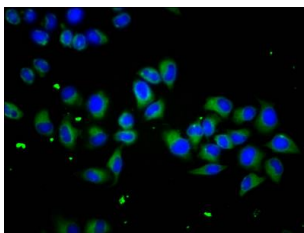
Immunogen:

Recombinant Human Signal peptide, CUB and EGF-like domain-containing protein 1 protein (453-566AA).

Storage:

Preservative: 0.03% Proclin 300. Constituents: 50% Glycerol, 0.01M PBS, pH 7.4

Product Images



Immunofluorescence staining of HeLa cells with PACO60208 at 1:133, counter-stained with DAPI. The cells were fixed in 4% formaldehyde, permeabilized using 0.2% Triton X-100 and blocked in 10% normal Goat Serum. The cells were then incubated with the antibody overnight at 4°C. The secondary antibody was Alexa Fluor 488-conjugated AffiniPure Goat Anti-Rabbit IgG(H+L).