

Product Information

Size:

50ug

Reactivity:

Human

Source:

Rabbit

Isotype:

IgG

Applications:

ELISA, IF

Recommended dilutions:

ELISA:1:2000-1:10000, IF:1:50-1:200

Protein Background:

Synaptic adhesion molecule required for the formation of target-specific synapses. Required for formation of target-specific synapses at hippocampal mossy fiber synapses. Required for formation of mossy fiber filopodia, the synaptic structures connecting dentate granule and GABA neurons. Probably acts as a homophilic adhesion molecule that promotes trans-cellular interactions and stabilize mossy fiber filipodia contact and subsequent synapse formation. Required for the coalescence of vomeronasal sensory neuron axons. May be involved in the hematopoietic supportive capacity of stroma cells; the secreted extracellular domain is directly responsible for supporting hematopoietic stem cells.

Gene ID:

KIRREL3

Uniprot

Q8IZU9

Synonyms:

Kin of IRRE-like protein 3 (Kin of irregular chiasm-like protein 3) (Nephrin-like protein 2) [Cleaved into: Processed kin of IRRE-like protein 3], KIRREL3, KIAA1867 NEPH2

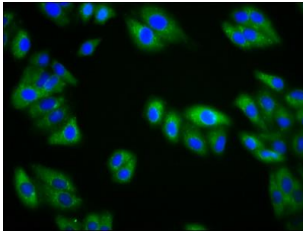
Immunogen:

Recombinant Human Kin of IRRE-like protein 3 protein (200-343AA).

Storage:

Preservative: 0.03% Proclin 300. Constituents: 50% Glycerol, 0.01M PBS, pH 7.4

Product Images



Immunofluorescence staining of HepG2 cells with PACO60216 at 1:133, counter-stained with DAPI. The cells were fixed in 4% formaldehyde, permeabilized using 0.2% Triton X-100 and blocked in 10% normal Goat Serum. The cells were then incubated with the antibody overnight at 4°C. The secondary antibody was Alexa Fluor 488-conjugated AffiniPure Goat Anti-Rabbit IgG(H+L).