

# HIST1H2BC (Ab-16) Antibody



PACO60504

---

## Product Information

**Size:**

50ul

**Reactivity:**

Human, Rat

**Source:**

Rabbit

**Isotype:**

IgG

**Applications:**

ELISA, WB, IHC, IF

**Recommended dilutions:**

ELISA:1:2000-1:10000, WB:1:100-1:1000,  
IHC:1:10-1:100, IF:1:1-1:10

**Protein Background:**

Core component of nucleosome. Nucleosomes wrap and compact DNA into chromatin, limiting DNA accessibility to the cellular machineries which require DNA as a template. Histones thereby play a central role in transcription regulation, DNA repair, DNA replication and chromosomal stability. DNA accessibility is regulated via a complex set of post-translational modifications of histones, also called histone code, and nucleosome remodeling.

**Gene ID:**

HIST1H2BC

**Uniprot**

P62807

**Synonyms:**

Histone H2B type 1-C/E/F/G/I (Histone H2B.1 A) (Histone H2B. a) (H2B/a) (Histone H2B. g) (H2B/g) (Histone H2B. h) (H2B/h) (Histone H2B. k) (H2B/k) (Histone H2B. l) (H2B/l), HIST1H2BC; HIST1H2BE; HIST1H2BF; HIST1H2BG; HIST1H2BI, H2BFL; H2BFH; H2BFG; H2BFA; H2BFK

**Immunogen:**

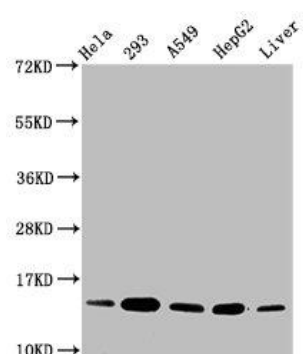
Peptide sequence around site of Lys (16) derived from Human Histone H2B type 1-C/E/F/G/I.

**Storage:**

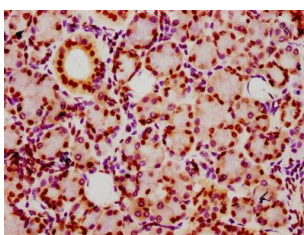
Preservative: 0.03% Proclin 300. Constituents: 50% Glycerol, 0.01M PBS, pH 7.4

## Product Images

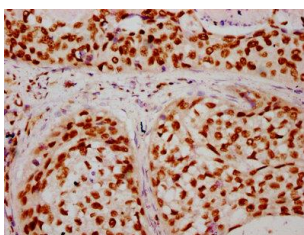
---



Western Blot. Positive WB detected in: HeLa whole cell lysate, 293 whole cell lysate, A549 whole cell lysate, HepG2 whole cell lysate, Rat liver tissue. All lanes: HIST1H2BC antibody at 0.15 $\mu$ g/ml. Secondary. Goat polyclonal to rabbit IgG at 1/50000 dilution. Predicted band size: 14 kDa. Observed band size: 14 kDa.



IHC image of PACO60504 diluted at 1:20 and staining in paraffin-embedded human pancreatic tissue performed on a Leica Bond<sup>TM</sup> system. After dewaxing and hydration, antigen retrieval was mediated by high pressure in a citrate buffer (pH 6.0). Section was blocked with 10% normal goat serum 30min at RT. Then primary antibody (1% BSA) was incubated at 4 $^{\circ}$ C overnight. The primary is detected by a biotinylated secondary antibody and visualized using an HRP conjugated SP system.



IHC image of PACO60504 diluted at 1:20 and staining in paraffin-embedded human cervical cancer tissue performed on a Leica Bond<sup>TM</sup> system. After dewaxing and hydration, antigen retrieval was mediated by high pressure in a citrate buffer (pH 6.0). Section was blocked with 10% normal goat serum 30min at RT. Then primary antibody (1% BSA) was incubated at 4 $^{\circ}$ C overnight. The primary is detected by a biotinylated secondary antibody and visualized using an HRP conjugated SP system.