

PACO60725

Product Information

Size:

50ug

Reactivity:

Human

Source:

Rabbit

Isotype:

IgG

Applications:

ELISA, IHC

Recommended dilutions:

ELISA:1:2000-1:10000, IHC:1:500-1:1000

Protein Background:

mitochondrial matrix, isovaleryl-CoA dehydrogenase activity, branched-chain amino acid, catabolic process, leucine catabolic process.

Gene ID:

IVD

Uniprot

P26440

Synonyms:

Isovaleryl-CoA dehydrogenase, mitochondrial (IVD) (EC 1.3.8.4), IVD

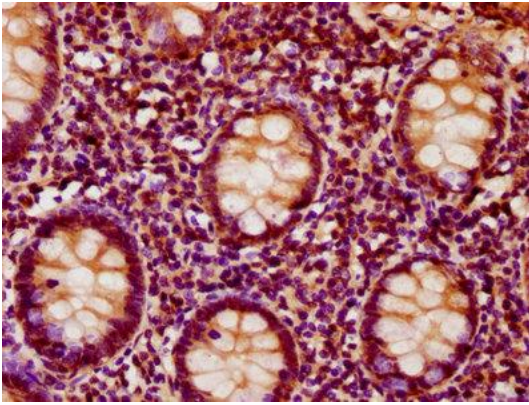
Immunogen:

Recombinant Human Isovaleryl-CoA dehydrogenase, mitochondrial protein (139-241AA).

Storage:

Preservative: 0.03% Proclin 300. Constituents: 50% Glycerol, 0.01M PBS, pH 7.4

Product Images



IHC image of PACO60725 diluted at 1:500 and staining in paraffin-embedded human appendix tissue performed on a Leica Bond™ system. After dewaxing and hydration, antigen retrieval was mediated by high pressure in a citrate buffer (pH 6.0). Section was blocked with 10% normal goat serum 30min at RT. Then primary antibody (1% BSA) was incubated at 4°C overnight. The primary is detected by a biotinylated secondary antibody and visualized using an HRP conjugated SP system.