

# KIR2DL2 Antibody



PACO60737

---

## Product Information

**Size:**

50ug

**Reactivity:**

Human

**Source:**

Rabbit

**Isotype:**

IgG

**Applications:**

ELISA, IF

**Recommended dilutions:**

ELISA:1:2000-1:10000, IF:1:50-1:200

**Protein Background:**

Receptor on natural killer (NK) cells for HLA-Cw1, 3, 7, and 8 allotypes. Inhibits the activity of NK cells thus preventing cell lysis.

**Gene ID:**

KIR2DL2

**Uniprot**

P43627

**Synonyms:**

Killer cell immunoglobulin-like receptor 2DL2 (CD158 antigen-like family member B1) (MHC class I NK cell receptor) (Natural killer-associated transcript 6) (NKAT-6) (p58 natural killer cell receptor clone CL-43) (p58 NK receptor CL-43) (CD antigen CD158b1), KIR2DL2, CD158B1 NKAT6

**Immunogen:**

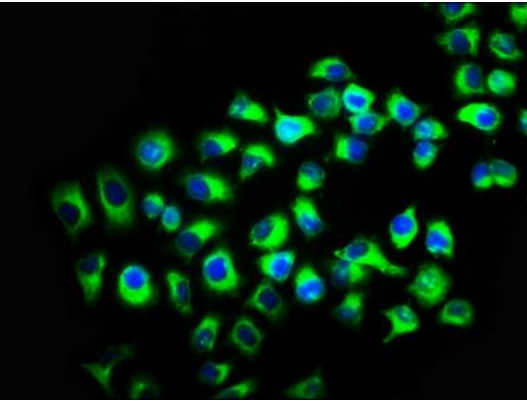
Recombinant Human Killer cell immunoglobulin-like receptor 2DL2 protein (22-245AA).

**Storage:**

Preservative: 0.03% Proclin 300. Constituents: 50% Glycerol, 0.01M PBS, pH 7.4

## Product Images

---



Immunofluorescence staining of A549 cells with PACO60737 at 1:133, counter-stained with DAPI. The cells were fixed in 4% formaldehyde, permeabilized using 0.2% Triton X-100 and blocked in 10% normal Goat Serum. The cells were then incubated with the antibody overnight at 4°C. The secondary antibody was Alexa Fluor 488-conjugated AffiniPure Goat Anti-Rabbit IgG(H+L).