

Krt18 Antibody



PACO60745

Product Information

Size:

50ug

Reactivity:

Mouse, Human

Source:

Rabbit

Isotype:

IgG

Applications:

ELISA, WB, IHC

Recommended dilutions:

ELISA:1:2000-1:10000, WB:1:500-1:5000,
IHC:1:20-1:200

Protein Background:

When phosphorylated, plays a role in filament reorganization. Involved in the delivery of mutated CFTR to the plasma membrane. Involved in the uptake of thrombin-antithrombin complexes by hepatic cells. Together with KRT8, is involved in interleukin-6 (IL-6)-mediated barrier protection.

Gene ID:

Krt18

Uniprot

P05784

Synonyms:

Keratin, type I cytoskeletal 18 (Cytokeratin endo B) (Keratin D) (Cytokeratin-18) (CK-18) (Keratin-18) (K18), Krt18, Kerd Krt1-18

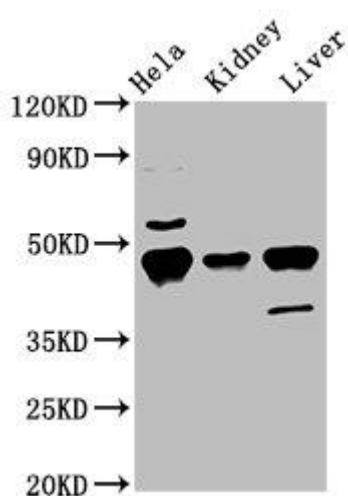
Immunogen:

Recombinant Mouse Keratin, type I cytoskeletal 18 protein (200-423AA).

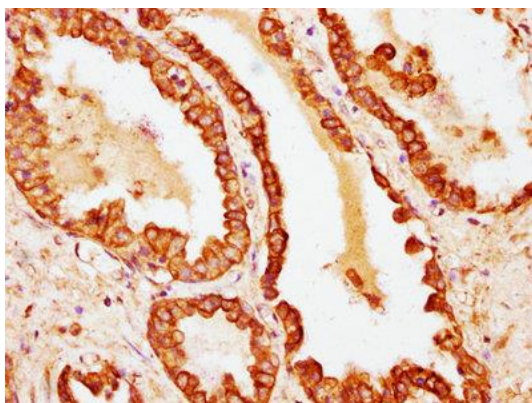
Storage:

Preservative: 0.03% Proclin 300. Constituents: 50% Glycerol, 0.01M PBS, pH 7.4

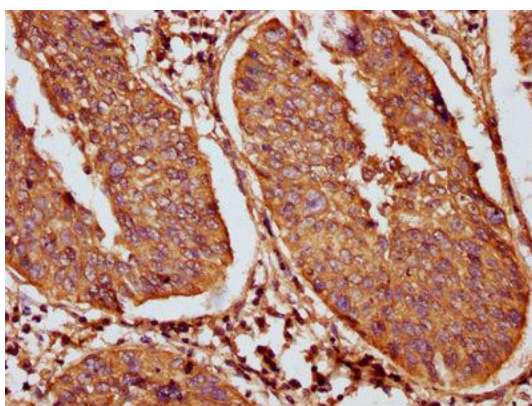
Product Images



Western Blot. Positive WB detected in: HeLa whole cell lysate, Mouse kidney tissue, Mouse liver tissue. All lanes: Krt18 antibody at 5.5 μ g/ml. Secondary. Goat polyclonal to rabbit IgG at 1/50000 dilution. Predicted band size: 48 kDa. Observed band size: 48 kDa.



IHC image of PACO60745 diluted at 1:100 and staining in paraffin-embedded human prostate cancer performed on a Leica BondTM system. After dewaxing and hydration, antigen retrieval was mediated by high pressure in a citrate buffer (pH 6.0). Section was blocked with 10% normal goat serum 30min at RT. Then primary antibody (1% BSA) was incubated at 4°C overnight. The primary is detected by a biotinylated secondary antibody and visualized using an HRP conjugated SP system.



IHC image of PACO60745 diluted at 1:100 and staining in paraffin-embedded human cervical cancer performed on a Leica BondTM system. After dewaxing and hydration, antigen retrieval was mediated by high pressure in a citrate buffer (pH 6.0). Section was blocked with 10% normal goat serum 30min at RT. Then primary antibody (1% BSA) was incubated at 4°C overnight. The primary is detected by a biotinylated secondary antibody and visualized using an HRP conjugated SP system.