

RPL7A Antibody



PACO60805

Product Information

Size:

50ug

Reactivity:

Human, Mouse

Source:

Rabbit

Isotype:

IgG

Applications:

ELISA, WB, IHC

Recommended dilutions:

ELISA:1:2000-1:10000, WB:1:500-1:5000,
IHC:1:200-1:500

Protein Background:

cytoplasm, cytosol, cytosolic large ribosomal subunit, extracellular exosome, focal adhesion, membrane, nucleolus, nucleus, polysomal ribosome, cadherin binding.

Gene ID:

RPL7A

Uniprot

P62424

Synonyms:

60S ribosomal protein L7a (Large ribosomal subunit protein eL8) (PLA-X polypeptide) (Surfeit locus protein 3), RPL7A, SURF-3 SURF3

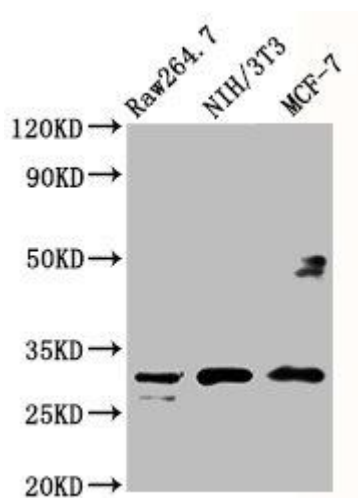
Immunogen:

Recombinant Human 60S ribosomal protein L7a protein (2-138AA).

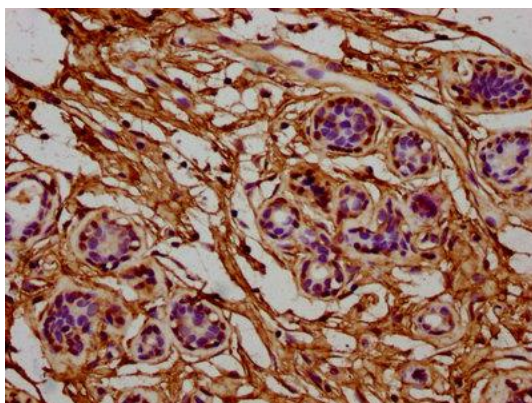
Storage:

Preservative: 0.03% Proclin 300. Constituents: 50% Glycerol, 0.01M PBS, pH 7.4

Product Images



Western Blot. Positive WB detected in: RAW264.7 whole cell lysate, NIH/3T3 whole cell lysate, MCF-7 whole cell lysate. All lanes: RPL7A antibody at 5 μ g/ml. Secondary: Goat polyclonal to rabbit IgG at 1/50000 dilution. Predicted band size: 30 kDa. Observed band size: 30 kDa.



IHC image of PACO60805 diluted at 1:400 and staining in paraffin-embedded human breast cancer performed on a Leica BondTM system. After dewaxing and hydration, antigen retrieval was mediated by high pressure in a citrate buffer (pH 6.0). Section was blocked with 10% normal goat serum 30min at RT. Then primary antibody (1% BSA) was incubated at 4 $^{\circ}$ C overnight. The primary is detected by a biotinylated secondary antibody and visualized using an HRP conjugated SP system.