

SLC16A11 Antibody



PACO61105

Product Information

Size:

50ug

Reactivity:

Human

Source:

Rabbit

Isotype:

IgG

Applications:

ELISA, WB, IF

Recommended dilutions:

ELISA:1:2000-1:10000, WB:1:500-1:5000,
IF:1:50-1:200

Protein Background:

Proton-linked monocarboxylate transporter. May catalyze the transport of monocarboxylates across the plasma membrane (Probable). Probably involved in hepatic lipid metabolism: overexpression results in an increase of triacylglycerol(TAG) levels, small increases in intracellular diacylglycerols and decreases in lysophosphatidylcholine, cholesterol ester and sphingomyelin lipids.

Gene ID:

SLC16A11

Uniprot

Q8NCK7

Synonyms:

Monocarboxylate transporter 11 (MCT 11) (Solute carrier family 16 member 11), SLC16A11, MCT11

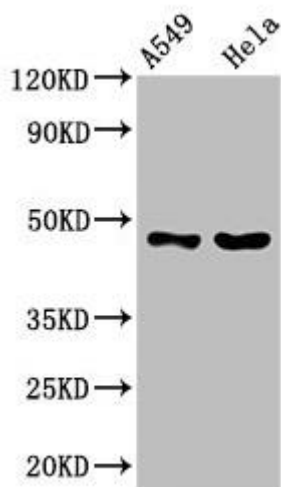
Immunogen:

Recombinant Human Monocarboxylate transporter 11 protein (428-471AA).

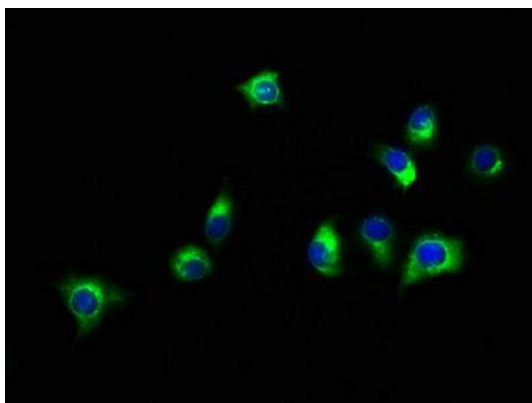
Storage:

Preservative: 0.03% Proclin 300. Constituents: 50% Glycerol, 0.01M PBS, pH 7.4

Product Images



Western Blot. Positive WB detected in: A549 whole cell lysate, HeLa whole cell lysate. All lanes: SLC16A11 antibody at 3.8 μ g/ml. Secondary: Goat polyclonal to rabbit IgG at 1/50000 dilution. Predicted band size: 48 kDa. Observed band size: 48 kDa.



Immunofluorescence staining of A549 cells with PACO61105 at 1:150, counter-stained with DAPI. The cells were fixed in 4% formaldehyde, permeabilized using 0.2% Triton X-100 and blocked in 10% normal Goat Serum. The cells were then incubated with the antibody overnight at 4°C. The secondary antibody was Alexa Fluor 488-conjugated AffiniPure Goat Anti-Rabbit IgG(H+L).