

# BPIFB3 Antibody



PACO61286

---

## Product Information

**Size:**

50ug

**Reactivity:**

Human, Mouse

**Source:**

Rabbit

**Isotype:**

IgG

**Applications:**

ELISA, WB

**Recommended dilutions:**

ELISA:1:2000-1:10000, WB:1:500-1:5000

**Protein Background:**

May have the capacity to recognize and bind specific classes of odorants. May act as a carrier molecule, transporting odorants across the mucus layer to access receptor sites. May serve as a primary defense mechanism by recognizing and removing potentially harmful odorants or pathogenic microorganisms from the mucosa or clearing excess odorant from mucus to enable new odorant stimuli to be received.

**Gene ID:**

BPIFB3

**Uniprot**

P59826

**Synonyms:**

BPI fold-containing family B member 3, Ligand-binding protein RYA3, Long palate, lung and nasal epithelium carcinoma-associated protein 3, BPIFB3, C20orf185, LPLUNC3

**Immunogen:**

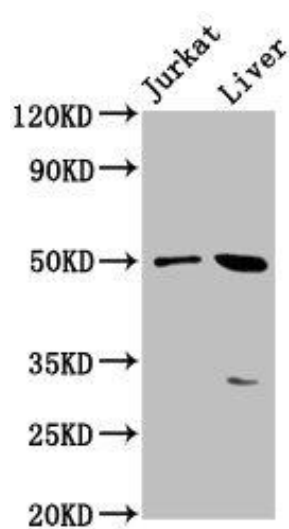
Recombinant Human BPI fold-containing family B member 3 protein (248-352AA).

**Storage:**

Preservative: 0.03% Proclin 300. Constituents: 50% Glycerol, 0.01M PBS, pH 7.4

## Product Images

---



Western Blot. Positive WB detected in: Jurkat whole cell lysate, Mouse liver tissue. All lanes: BPIFB3 antibody at 3.8 $\mu$ g/ml. Secondary. Goat polyclonal to rabbit IgG at 1/50000 dilution. Predicted band size: 51 kDa. Observed band size: 51 kDa.