

lats2 Antibody



PACO61330

Product Information

Size:

50ug

Reactivity:

Zebrafish

Source:

Rabbit

Isotype:

IgG

Applications:

ELISA, WB

Recommended dilutions:

ELISA:1:2000-1:10000, WB:1:500-1:5000

Protein Background:

Gene ID:

lats2

Uniprot

B0S8I4

Synonyms:

Large tumor suppressor kinase 2, lats2

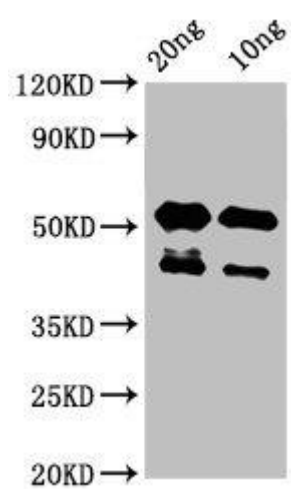
Immunogen:

Recombinant Zebrafish Large tumor suppressor kinase 2 protein (1022-1140AA).

Storage:

Preservative: 0.03% Proclin 300. Constituents: 50% Glycerol, 0.01M PBS, pH 7.4

Product Images



Western Blot. Positive WB detected in Recombinant protein. All lanes: lats2 antibody at 3 μ g/ml. Secondary. Goat polyclonal to rabbit IgG at 1/50000 dilution. Predicted band size: 43 kDa. Observed band size: 43, 53 kDa.