

PACO61354

Product Information

Size:

50ug

Reactivity:

Zebrafish

Source:

Rabbit

Isotype:

IgG

Applications:

ELISA, WB

Recommended dilutions:

ELISA:1:2000-1:10000, WB:1:500-1:5000

Protein Background:

Regulates a signal transduction pathway linking plasma membrane receptors to the assembly of focal adhesions and actin stress fibers.

Gene ID:

rhoaa

Uniprot

Q6NUX8

Synonyms:

Rho-related GTP-binding protein RhoA-A, rhoaa

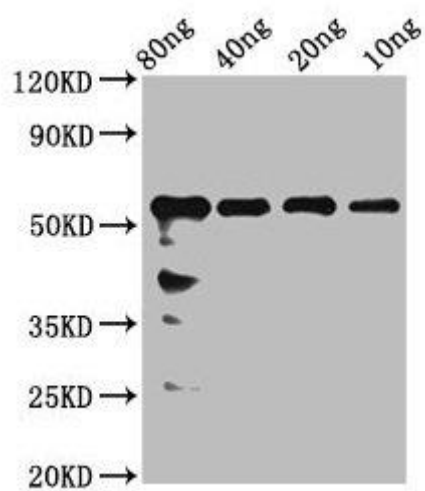
Immunogen:

Recombinant Zebrafish Rho-related GTP-binding protein RhoA-A protein (1-190AA).

Storage:

Preservative: 0.03% Proclin 300. Constituents: 50% Glycerol, 0.01M PBS, pH 7.4

Product Images



Western Blot. Positive WB detected in Recombinant protein. All lanes: rhoaa antibody at 2.4 μ g/ml. Secondary. Goat polyclonal to rabbit IgG at 1/50000 dilution. Predicted band size: 51 kDa. Observed band size: 56 kDa.