

# MSS51 Antibody



PACO61386

---

## Product Information

**Size:**

50ug

**Reactivity:**

Human

**Source:**

Rabbit

**Isotype:**

IgG

**Applications:**

ELISA, WB

**Recommended dilutions:**

ELISA:1:2000-1:10000, WB:1:500-1:5000

**Protein Background:**

**Gene ID:**

MSS51

**Uniprot**

Q4VC12

**Synonyms:**

Putative protein MSS51 homolog, mitochondrial, Zinc finger MYND domain-containing protein 17, MSS51, ZMYND17

**Immunogen:**

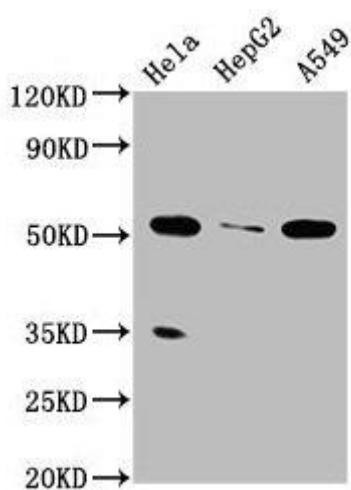
Recombinant Human Putative protein MSS51 homolog, mitochondrial protein (258-365AA).

**Storage:**

Preservative: 0.03% Proclin 300. Constituents: 50% Glycerol, 0.01M PBS, pH 7.4

## Product Images

---



Western Blot. Positive WB detected in: HeLa whole cell lysate, HepG2 whole cell lysate, A549 whole cell lysate. All lanes: MSS51 antibody at 4 $\mu$ g/ml. Secondary. Goat polyclonal to rabbit IgG at 1/50000 dilution. Predicted band size: 52, 27, 11 kDa. Observed band size: 52 kDa.