

GLI4 Antibody



PACO61526

Product Information

Size:

50ug

Reactivity:

Human

Source:

Rabbit

Isotype:

IgG

Applications:

ELISA, IHC

Recommended dilutions:

ELISA:1:2000-1:10000, IHC:1:200-1:500

Protein Background:

transcription factor activity, sequence-specific DNA binding, regulation of transcription, DNA-templated.

Gene ID:

GLI4

Uniprot

P10075

Synonyms:

Zinc finger protein GLI4, Krueppel-related zinc finger protein 4, Protein HKR4, GLI4, HKR4

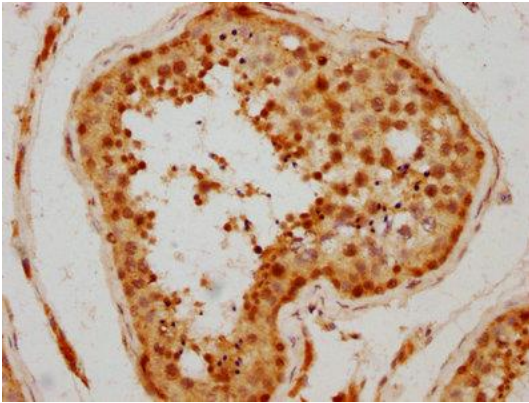
Immunogen:

Recombinant Human Zinc finger protein GLI4 protein (7-184AA).

Storage:

Preservative: 0.03% Proclin 300. Constituents: 50% Glycerol, 0.01M PBS, pH 7.4

Product Images



IHC image of PACO61526 diluted at 1:300 and staining in paraffin-embedded human testis tissue performed on a Leica Bond™ system. After dewaxing and hydration, antigen retrieval was mediated by high pressure in a citrate buffer (pH 6.0). Section was blocked with 10% normal goat serum 30min at RT. Then primary antibody (1% BSA) was incubated at 4°C overnight. The primary is detected by a biotinylated secondary antibody and visualized using an HRP conjugated SP system.