

# IMPG2 Antibody



PACO61546

---

## Product Information

**Size:**

50ug

**Reactivity:**

Human

**Source:**

Rabbit

**Isotype:**

IgG

**Applications:**

ELISA, IF

**Recommended dilutions:**

ELISA:1:2000-1:10000, IF:1:50-1:200

**Protein Background:**

Chondroitin sulfate- and hyaluronan-binding proteoglycan involved in the organization of interphotoreceptor matrix; may participate in the maturation and maintenance of the light-sensitive photoreceptor outer segment. Binds heparin.

**Gene ID:**

IMPG2

**Uniprot**

Q9BZV3

**Synonyms:**

Interphotoreceptor matrix proteoglycan 2, Interphotoreceptor matrix proteoglycan of 200 kDa, IPM 200, Sialoprotein associated with cones and rods proteoglycan, Spacrcan, IMPG2, IPM200

**Immunogen:**

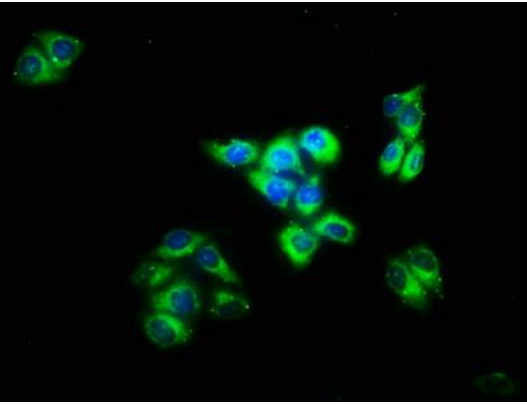
Recombinant Human Interphotoreceptor matrix proteoglycan 2 protein (616-759AA).

**Storage:**

Preservative: 0.03% Proclin 300. Constituents: 50% Glycerol, 0.01M PBS, pH 7.4

## Product Images

---



Immunofluorescence staining of HeLa cells with PACO61546 at 1:133, counter-stained with DAPI. The cells were fixed in 4% formaldehyde, permeabilized using 0.2% Triton X-100 and blocked in 10% normal Goat Serum. The cells were then incubated with the antibody overnight at 4°C. The secondary antibody was Alexa Fluor 488-conjugated AffiniPure Goat Anti-Rabbit IgG(H+L).