

MATN3 Antibody



PACO61558

Product Information

Size:

50ug

Reactivity:

Human, Mouse

Source:

Rabbit

Isotype:

IgG

Applications:

ELISA, WB

Recommended dilutions:

ELISA:1:2000-1:10000, WB:1:500-1:5000

Protein Background:

Major component of the extracellular matrix of cartilage and may play a role in the formation of extracellular filamentous networks.

Gene ID:

MATN3

Uniprot

O15232

Synonyms:

Matrilin-3, MATN3

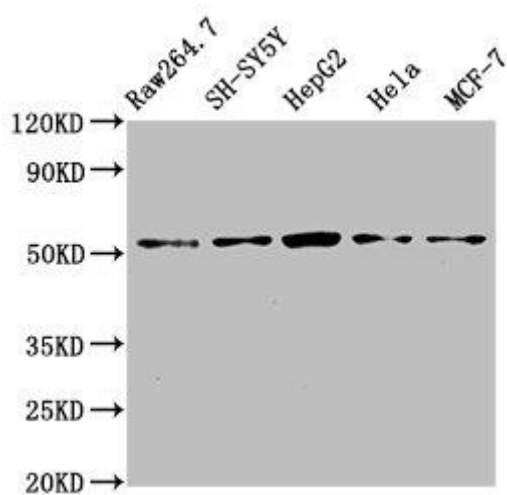
Immunogen:

Recombinant Human Matrilin-3 protein (1-240AA).

Storage:

Preservative: 0.03% Proclin 300. Constituents: 50% Glycerol, 0.01M PBS, pH 7.4

Product Images



Western Blot. Positive WB detected in: RAW264.7 whole cell lysate, SH-SY5Y whole cell lysate, HepG2 whole cell lysate, HeLa whole cell lysate, MCF-7 whole cell lysate. All lanes: MATN3 antibody at 4 μ g/ml. Secondary. Goat polyclonal to rabbit IgG at 1/50000 dilution. Predicted band size: 53, 49 kDa. Observed band size: 53 kDa.