

# PRPF40A Antibody



PACO61582

---

## Product Information

**Size:**

50ug

**Reactivity:**

Human

**Source:**

Rabbit

**Isotype:**

IgG

**Applications:**

ELISA, WB, IHC

**Recommended dilutions:**

ELISA:1:2000-1:10000, WB:1:500-1:5000,  
IHC:1:200-1:500

**Protein Background:**

Binds to WASL/N-WASP and suppresses its translocation from the nucleus to the cytoplasm, thereby inhibiting its cytoplasmic function. Plays a role in the regulation of cell morphology and cytoskeletal organization. Required in the control of cell shape and migration. May play a role in cytokinesis. May be involved in pre-mRNA splicing.

**Gene ID:**

PRPF40A

**Uniprot**

O75400

**Synonyms:**

Pre-mRNA-processing factor 40 homolog A, Fas ligand-associated factor 1, Formin-binding protein 11, Formin-binding protein 3, Huntingtin yeast partner A, Huntingtin-interacting protein 10, HIP-10, Huntingtin-interacting protein A, Renal carcinoma antigen NY-REN-6, PRPF40A, FBP11, FLAF1, FNBP3, HIP10, HYPA, HSPC225

**Immunogen:**

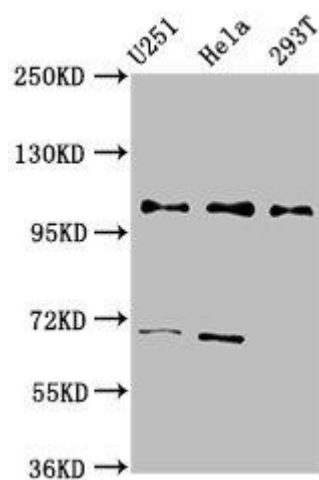
Recombinant Human Pre-mRNA-processing factor 40 homolog A protein (120-266AA).

**Storage:**

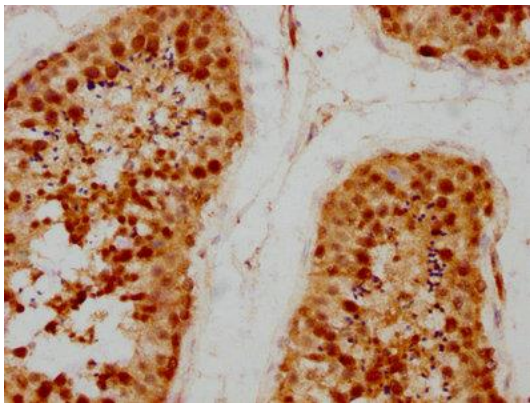
Preservative: 0.03% Proclin 300. Constituents: 50% Glycerol, 0.01M PBS, pH 7.4

## Product Images

---



Western Blot. Positive WB detected in: U251 whole cell lysate, HeLa whole cell lysate, 293T whole cell lysate. All lanes: PRPF40A antibody at 2.7µg/ml. Secondary. Goat polyclonal to rabbit IgG at 1/50000 dilution. Predicted band size: 109, 106, 107, 11 kDa. Observed band size: 109 kDa.



IHC image of PACO61582 diluted at 1:200 and staining in paraffin-embedded human testis tissue performed on a Leica Bond™ system. After dewaxing and hydration, antigen retrieval was mediated by high pressure in a citrate buffer (pH 6.0). Section was blocked with 10% normal goat serum 30min at RT. Then primary antibody (1% BSA) was incubated at 4°C overnight. The primary is detected by a biotinylated secondary antibody and visualized using an HRP conjugated SP system.