

Product Information

Size:

50ul

Reactivity:

Human

Source:

Rabbit

Isotype:

IgG

Applications:

ELISA, WB, IF

Recommended dilutions:

ELISA:1:2000-1:10000, WB:1:500-1:5000,
IF:1:20-1:200

Protein Background:

Component of the U7 snRNP complex that is involved in the histone 3'-end pre-mRNA processing. Increases U7 snRNA levels but not histone 3'-end pre-mRNA processing activity, when overexpressed. Required for cell cycle progression from G1 to S phases. Binds specifically to the Sm-binding site of U7 snRNA.

Gene ID:

LSM11

Uniprot

P83369

Synonyms:

U7 snRNA-associated Sm-like protein LSm11, LSM11

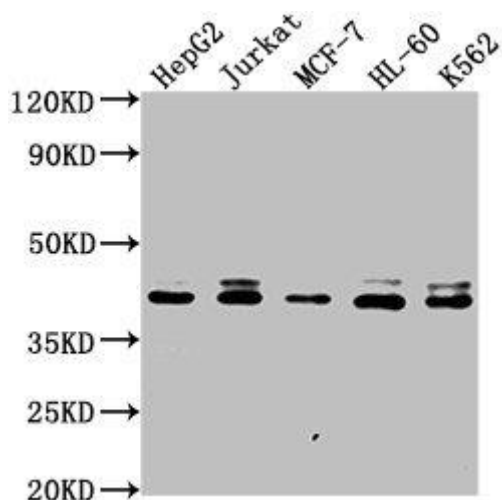
Immunogen:

Recombinant Human U7 snRNA-associated Sm-like protein LSm11 protein (1-141AA).

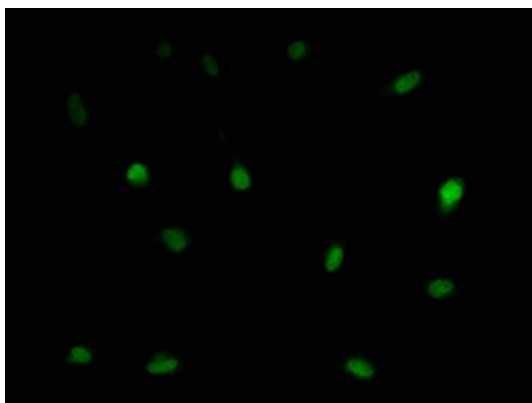
Storage:

Preservative: 0.03% Proclin 300. Constituents: 50% Glycerol, 0.01M PBS, pH 7.4

Product Images



Western Blot. Positive WB detected in: HepG2 whole cell lysate, Jurkat whole cell lysate, MCF-7 whole cell lysate, HL-60 whole cell lysate, K562 whole cell lysate. All lanes: LSM11 antibody at 1:2000. Secondary. Goat polyclonal to rabbit IgG at 1/50000 dilution. Predicted band size: 40 kDa. Observed band size: 40 kDa.



Immunofluorescence staining of U251 cells with PACO61698 at 1:166, counter-stained with DAPI. The cells were fixed in 4% formaldehyde, permeabilized using 0.2% Triton X-100 and blocked in 10% normal Goat Serum. The cells were then incubated with the antibody overnight at 4°C. The secondary antibody was Alexa Fluor 488-conjugated AffiniPure Goat Anti-Rabbit IgG(H+L).