
Product Information

Size:

50ul

Reactivity:

Zebrafish

Source:

Rabbit

Isotype:

IgG

Applications:

ELISA, WB

Recommended dilutions:

ELISA:1:2000-1:10000, WB:1:500-1:5000

Protein Background:

integral component of plasma membrane, tumor necrosis factor-activated receptor activity, apoptotic signaling pathway, immune response, inflammatory response, notochord development, positive regulation of apoptotic process, regulation of cell proliferation, response to lipopolysaccharide.

Gene ID:

fas

Uniprot

F1QG24

Synonyms:

fas

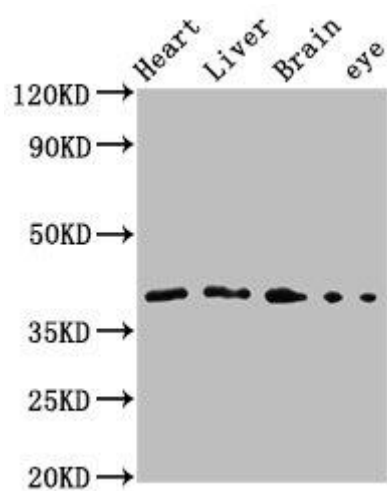
Immunogen:

Recombinant Zebrafish Fas cell surface death receptor protein (185-293AA).

Storage:

Preservative: 0.03% Proclin 300. Constituents: 50% Glycerol, 0.01M PBS, pH 7.4

Product Images



Western Blot. Positive WB detected in: Zebrafish heart tissue, Zebrafish liver tissue, Zebrafish brain tissue, Zebrafish eye tissue. All lanes: fas antibody at 3.1µg/ml. Secondary. Goat polyclonal to rabbit IgG at 1/50000 dilution. Predicted band size: 34 kDa. Observed band size: 42 kDa.