

Product Information

Size:

50ul

Reactivity:

Clostridium botulinum

Source:

Rabbit

Isotype:

IgG

Applications:

ELISA, WB

Recommended dilutions:

ELISA:1:2000-1:10000, WB:1:500-1:5000

Protein Background:

Botulinum toxin acts by inhibiting neurotransmitter release. It binds to peripheral neuronal synapses, is internalized and moves by retrograde transport up the axon into the spinal cord where it can move between postsynaptic and presynaptic neurons. It inhibits neurotransmitter release by acting as a zinc endopeptidase that catalyzes the hydrolysis of the '58-Gln-|-Lys-59' bond of synaptobrevins-1 and -2.

Gene ID:

botF

Uniprot

P30996

Synonyms:

Botulinum neurotoxin type F (BoNT/F) (EC 3.4.24.69) (Bontoxilysin-F) [Cleaved into: Botulinum neurotoxin F light chain; Botulinum neurotoxin F heavy chain], botF

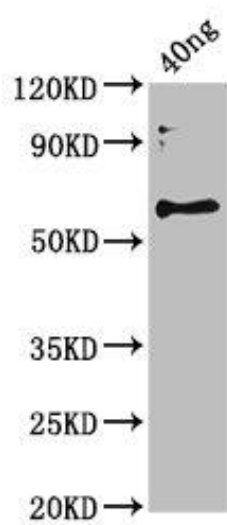
Immunogen:

Recombinant Clostridium botulinum Botulinum neurotoxin type F protein (1-436AA).

Storage:

Preservative: 0.03% Proclin 300. Constituents: 50% Glycerol, 0.01M PBS, pH 7.4

Product Images



Western Blot. Positive WB detected in Recombinant protein. All lanes: botF antibody at 3.5 μ g/ml. Secondary. Goat polyclonal to rabbit IgG at 1/50000 dilution. Predicted band size: 60 kDa. Observed band size: 60 kDa.