

# NS1 Antibody



PACO61846

---

## Product Information

**Size:**

50ul

**Reactivity:**

Human parvovirus B19

**Source:**

Rabbit

**Isotype:**

IgG

**Applications:**

ELISA, WB

**Recommended dilutions:**

ELISA:1:2000-1:10000, WB:1:500-1:5000

**Protein Background:**

Seems necessary for viral DNA replication.

**Gene ID:**

NS1

**Uniprot**

P07298

**Synonyms:**

Non-capsid protein NS-1 (NCVP1) (Non-structural protein NS1), NS1

**Immunogen:**

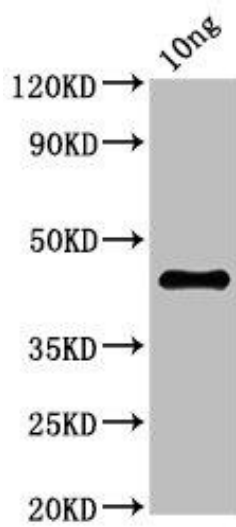
Recombinant Human parvovirus B19 Non-capsid protein NS-1 protein (1-255AA).

**Storage:**

Preservative: 0.03% Proclin 300. Constituents: 50% Glycerol, 0.01M PBS, pH 7.4

## Product Images

---



Western Blot. Positive WB detected in Recombinant protein. All lanes: NS1 antibody at 2.7 $\mu$ g/ml. Secondary. Goat polyclonal to rabbit IgG at 1/50000 dilution. Predicted band size: 45 kDa. Observed band size: 45 kDa.