

PACO61858

Product Information

Size:

50ul

Reactivity:

Desulfotalea psychrophila

Source:

Rabbit

Isotype:

IgG

Applications:

ELISA, WB

Recommended dilutions:

ELISA:1:2000-1:10000, WB:1:500-1:5000

Protein Background:

DNA ligase that catalyzes the formation of phosphodiester linkages between 5'-phosphoryl and 3'-hydroxyl groups in double-stranded DNA using NAD as a coenzyme and as the energy source for the reaction. It is essential for DNA replication and repair of damaged DNA.

Gene ID:

ligA

Uniprot

Q6API9

Synonyms:

DNA ligase (EC 6.5.1.2) (Polydeoxyribonucleotide synthase [NAD(+)]), ligA

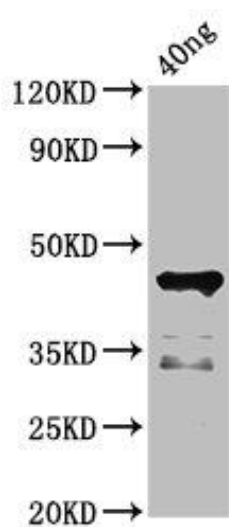
Immunogen:

Recombinant Desulfotalea psychrophila DNA ligase protein (340-679AA).

Storage:

Preservative: 0.03% Proclin 300. Constituents: 50% Glycerol, 0.01M PBS, pH 7.4

Product Images



Western Blot. Positive WB detected in Recombinant protein. All lanes: ligA antibody at 4.5 μ g/ml. Secondary. Goat polyclonal to rabbit IgG at 1/50000 dilution. Predicted band size: 45 kDa. Observed band size: 45 kDa.