

PACO61870

Product Information

Size:

50ul

Reactivity:

Zebrafish

Source:

Rabbit

Isotype:

IgG

Applications:

ELISA, WB

Recommended dilutions:

ELISA:1:2000-1:10000, WB:1:500-1:5000

Protein Background:

Gene ID:

vcp

Uniprot

Q7ZU99

Synonyms:

Transitional endoplasmic reticulum ATPase (TER ATPase) (EC 3.6.4.6) (Protein CDC48) (Valosin-containing protein) (VCP), vcp, cdc48

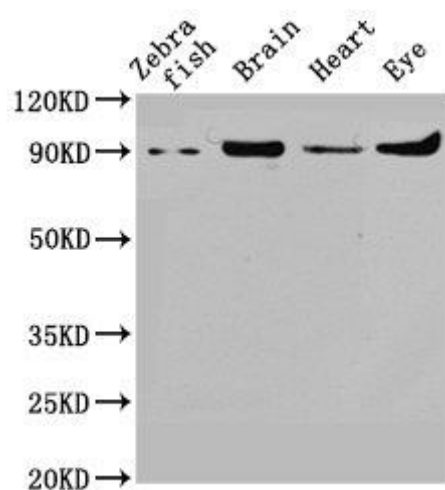
Immunogen:

Recombinant Zebrafish Transitional endoplasmic reticulum ATPase protein (704-806AA).

Storage:

Preservative: 0.03% Proclin 300. Constituents: 50% Glycerol, 0.01M PBS, pH 7.4

Product Images



Western Blot. Positive WB detected in: Zebrafish tissue, Zebrafish brain tissue, Zebrafish heart tissue, Zebrafish eye tissue. All lanes: vcp antibody at 1.8 μ g/ml. Secondary. Goat polyclonal to rabbit IgG at 1/50000 dilution. Predicted band size: 90 kDa. Observed band size: 90 kDa.