

Product Information

Size:

50ul

Reactivity:

Chicken anemia virus

Source:

Rabbit

Isotype:

IgG

Applications:

ELISA, WB

Recommended dilutions:

ELISA:1:2000-1:10000, WB:1:500-1:5000

Protein Background:

Self-assembles to form the virion icosahedral capsid with a T=1 symmetry. This very small capsid (25 nm in diameter) allows the virus to be very stable in the environment and resistant to some disinfectants, including detergents. Essential for the initial attachment to host receptors. After attachment, the virus is endocytosed and traffics to the nucleus. The capsid protein binds and transports the viral genome and Rep across the nuclear envelope.

Gene ID:

VP1

Uniprot

Q99153

Synonyms:

Capsid protein (CA1) (Coat protein), VP1

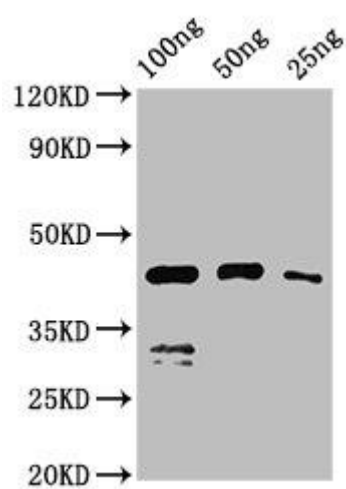
Immunogen:

Recombinant Chicken anemia virus Capsid protein (288-369AA).

Storage:

Preservative: 0.03% Proclin 300. Constituents: 50% Glycerol, 0.01M PBS, pH 7.4

Product Images



Western Blot. Positive WB detected in Recombinant protein. All lanes: VP1 antibody at 2.7 μ g/ml. Secondary. Goat polyclonal to rabbit IgG at 1/50000 dilution. Predicted band size: 44 kDa. Observed band size: 44 kDa.