

## Product Information

**Size:**

50ul

**Reactivity:**

Porphyromonas gingivalis

**Source:**

Rabbit

**Isotype:**

IgG

**Applications:**

ELISA, WB

**Recommended dilutions:**

ELISA:1:2000-1:10000, WB:1:500-1:5000

**Protein Background:**

Deiminates the guanidino group of C-terminal arginine residues on a variety of peptides, including the vasoregulatory peptide-hormone bradykinin, to yield ammonia and a citrulline residue. May promote the growth of the pathogen in the periodontal pocket by producing ammonia, ammonia having a protective effect during acid, c cleaning cycles in the mouth.

**Gene ID:**

PG\_1424

**Uniprot**

Q9RQJ2

**Synonyms:**

Peptidylarginine deiminase (EC 3.5.3)

**Immunogen:**

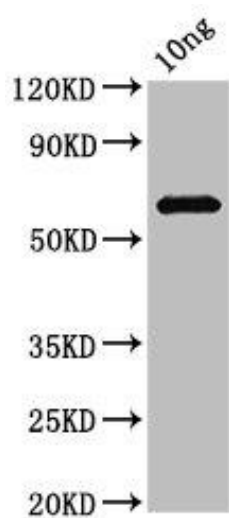
Recombinant Porphyromonas gingivalis Peptidylarginine deiminase protein (44-556AA).

**Storage:**

Preservative: 0.03% Proclin 300. Constituents: 50% Glycerol, 0.01M PBS, pH 7.4

## Product Images

---



Western Blot. Positive WB detected in Recombinant protein. All lanes: PG\_1424 antibody at 3.7 $\mu$ g/ml. Secondary. Goat polyclonal to rabbit IgG at 1/50000 dilution. Predicted band size: 63 kDa. Observed band size: 63 kDa.