

PACO62003

---

## Product Information

**Size:**

50ul

**Reactivity:**

Arabidopsis thaliana

**Source:**

Rabbit

**Isotype:**

IgG

**Applications:**

ELISA, WB

**Recommended dilutions:**

ELISA:1:2000-1:10000, WB:1:500-1:2000

**Protein Background:**

Involved in glutamate biosynthesis in leaf. Required for the reassimilation of ammonium ions generated during photorespiration.

**Gene ID:**

GLU1

**Uniprot**

Q9ZLN7

**Synonyms:**

Ferredoxin-dependent glutamate synthase 1, chloroplastic/mitochondrial (EC 1.4.7.1) (Fd-GOGAT 1), GLU1, GLS1

**Immunogen:**

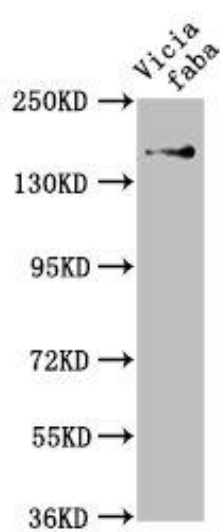
Recombinant Arabidopsis thaliana Ferredoxin-dependent glutamate synthase 1, chloroplastic/mitochondrial protein (106-505AA).

**Storage:**

Preservative: 0.03% Proclin 300. Constituents: 50% Glycerol, 0.01M PBS, pH 7.4

## Product Images

---



Western Blot. Positive WB detected in: *Vicia faba* leaf tissue. All lanes: GLU1 antibody at 1:1000. Secondary. Goat polyclonal to rabbit IgG at 1/50000 dilution. Predicted band size: 177, 180 kDa. Observed band size: 177 kDa.