

RB38 Antibody



PACO62015

Product Information

Size:

50ul

Reactivity:

Chlamydomonas reinhardtii

Source:

Rabbit

Isotype:

IgG

Applications:

ELISA, WB

Recommended dilutions:

ELISA:1:2000-1:10000, WB:1:500-1:2000

Protein Background:

Gene ID:

RB38

Uniprot

Q6EMK7

Synonyms:

RB38

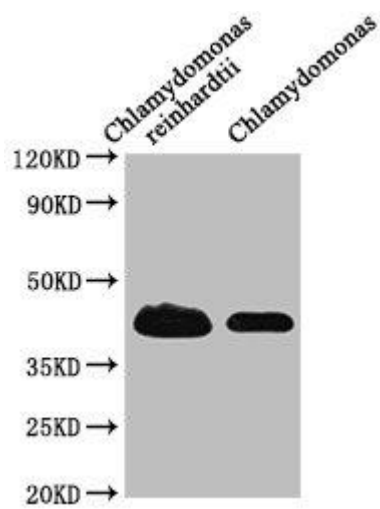
Immunogen:

Recombinant Chlamydomonas reinhardtii 38 kDa RNA-binding protein (1-382AA).

Storage:

Preservative: 0.03% Proclin 300. Constituents: 50% Glycerol, 0.01M PBS, pH 7.4

Product Images



Western Blot. Positive WB detected in: Chlamydomonas reinhardtii tissue, Chlamydomonas tissue. All lanes: RB38 antibody at 1:1000. Secondary. Goat polyclonal to rabbit IgG at 1/50000 dilution. Predicted band size: 45 kDa. Observed band size: 45 kDa.