

Product Information

Size:

50ul

Reactivity:

Arabidopsis thaliana

Source:

Rabbit

Isotype:

IgG

Applications:

ELISA, WB

Recommended dilutions:

ELISA:1:2000-1:10000, WB:1:500-1:2000

Protein Background:

Implicated in the defense of plants against pathogens (Probable). Not involved in plasmodesmal callose degradation and in the gating of plasmodesmata during tobamovirus infection.

Gene ID:

BG2

Uniprot

P33157

Synonyms:

Glucan endo-1,3-beta-glucosidase, acid, c isoform (EC 3.2.1.39) ((1->3)-beta-glucan endohydrolase) ((1->3)-beta-glucanase) (Beta-1,3-endoglucanase) (Beta-1,3-glucanase 2) (AtBG2) (Pathogenesis-related protein 2) (PR-2), BG2

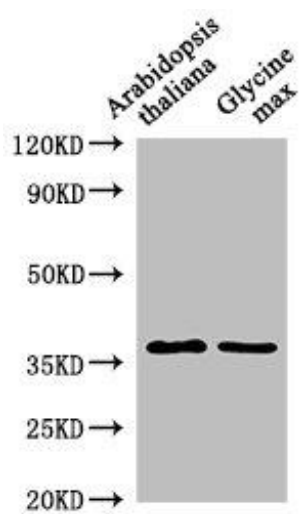
Immunogen:

Recombinant Arabidopsis thaliana Glucan endo-1,3-beta-glucosidase, acid, c isoform protein (31-339AA).

Storage:

Preservative: 0.03% Proclin 300. Constituents: 50% Glycerol, 0.01M PBS, pH 7.4

Product Images



Western Blot. Positive WB detected in: Arabidopsis thaliana leaf tissue, Glycine max leaf tissue. All lanes: BG2 antibody at 1:1000. Secondary: Goat polyclonal to rabbit IgG at 1/50000 dilution. Predicted band size: 38 kDa. Observed band size: 38 kDa.