

PACO62039

Product Information

Size:

50ul

Reactivity:

Arabidopsis thaliana

Source:

Rabbit

Isotype:

IgG

Applications:

ELISA, WB

Recommended dilutions:

ELISA:1:2000-1:10000, WB:1:500-1:2000

Protein Background:

RuBisCO catalyzes two reactions: the carboxylation of D-ribulose 1, 5-bisphosphate, the primary event in carbon dioxide fixation, as well as the oxidative fragmentation of the pentose substrate in the photorespiration process. Both reactions occur simultaneously and in competition at the same active site.

Gene ID:

rbcl

Uniprot

O03042

Synonyms:

Ribulose biphosphate carboxylase large chain (RuBisCO large subunit) (EC 4.1.1.39), rbcl

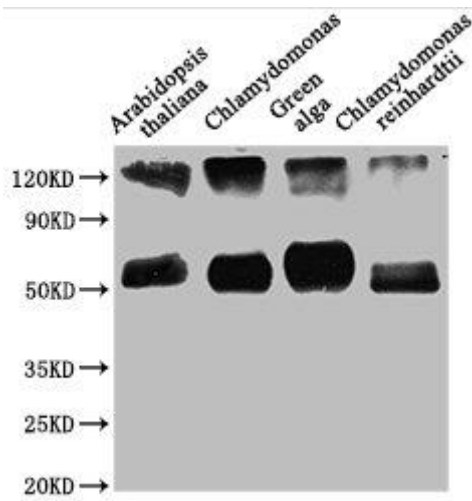
Immunogen:

Recombinant Arabidopsis thaliana Ribulose bisphosphate carboxylase large chain protein (3-479AA).

Storage:

Preservative: 0.03% Proclin 300. Constituents: 50% Glycerol, 0.01M PBS, pH 7.4

Product Images



Western Blot. Positive WB detected in: Arabidopsis thaliana leaf tissue, Chlamydomonas tissue, Green alga tissue, Chlamydomonas reinhardtii tissue. All lanes: rbcL antibody at 1:1250. Secondary. Goat polyclonal to rabbit IgG at 1/50000 dilution. Predicted band size: 53 kDa. Observed band size: 53 kDa.