

PACO62083

Product Information

Size:

50ul

Reactivity:

Arabidopsis thaliana

Source:

Rabbit

Isotype:

IgG

Applications:

ELISA, WB

Recommended dilutions:

ELISA:1:2000-1:10000, WB:1:500-1:2000

Protein Background:

apoplast, chloroplast, chloroplast stroma, cytosolic ribosome, membrane, nucleus, peroxisome, plasmodesma, glycolate oxidase activity, defense response to bacterium.

Gene ID:

GLO1

Uniprot

Q9LRR9

Synonyms:

(S)-2-hydroxy-acid, oxidase GLO1 (EC 1.1.3.15) (Glycolate oxidase 1) (AtGLO1) (GOX 1) (Short chain alpha-hydroxy acid, oxidase GLO1), GLO1

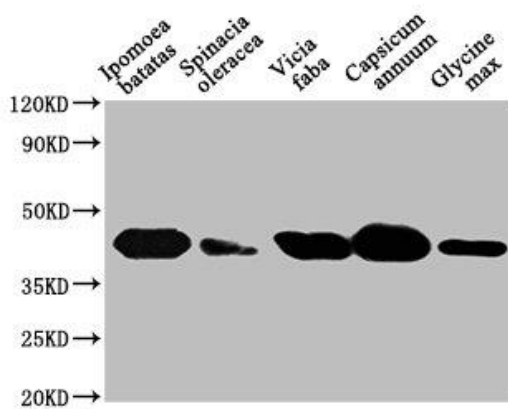
Immunogen:

Recombinant Arabidopsis thaliana (S)-2-hydroxy-acid, oxidase GLO1 protein (1-367AA).

Storage:

Preservative: 0.03% Proclin 300. Constituents: 50% Glycerol, 0.01M PBS, pH 7.4

Product Images



Western Blot. Positive WB detected in: Ipomoea batatas leaf tissue, Spinacia oleracea leaf tissue, Vicia faba leaf tissue, Capsicum annum leaf tissue, Glycine max leaf tissue. All lanes: GLO1 antibody at 1:1000. Secondary. Goat polyclonal to rabbit IgG at 1/50000 dilution. Predicted band size: 41, 39 kDa. Observed band size: 41 kDa.