

Product Information

Size:

50ul

Reactivity:

Human

Source:

Rabbit

Isotype:

IgG

Applications:

ELISA, IHC

Recommended dilutions:

ELISA:1:2000-1:10000, IHC:1:200-1:500

Protein Background:

Component of ribonuclease P, a protein complex that generates mature tRNA molecules by cleaving their 5'-ends. RPP38 may associate transiently with RNase P RNA as a factor involved in the transport of H1 RNA to the putative site of its assembly in the cell, the nucleolus.

Gene ID:

RPP38

Uniprot

P78345

Synonyms:

Ribonuclease P protein subunit p38 (RNaseP protein p38) (EC 3.1.26.5), RPP38

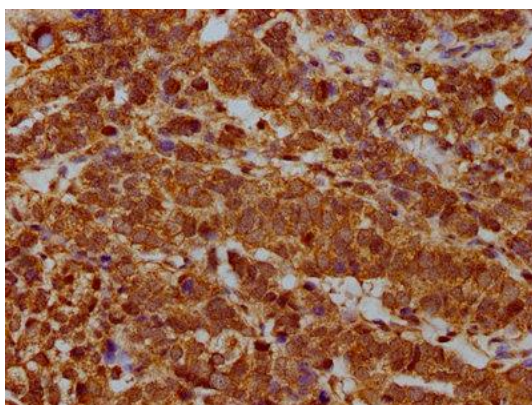
Immunogen:

Recombinant Human Ribonuclease P protein subunit p38 protein (210-283AA).

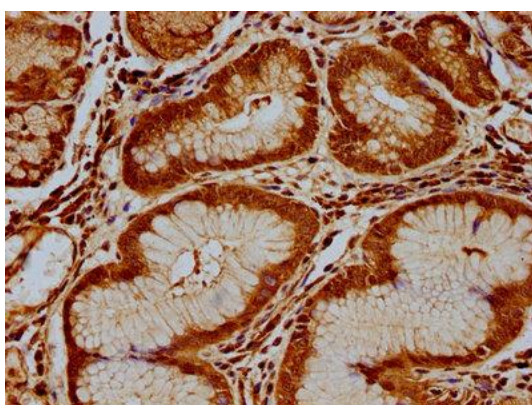
Storage:

Preservative: 0.03% Proclin 300. Constituents: 50% Glycerol, 0.01M PBS, pH 7.4

Product Images



IHC image of PACO62163 diluted at 1:400 and staining in paraffin-embedded human ovarian cancer performed on a Leica Bond™ system. After dewaxing and hydration, antigen retrieval was mediated by high pressure in a citrate buffer (pH 6.0). Section was blocked with 10% normal goat serum 30min at RT. Then primary antibody (1% BSA) was incubated at 4°C overnight. The primary is detected by a biotinylated secondary antibody and visualized using an HRP conjugated SP system.



IHC image of PACO62163 diluted at 1:400 and staining in paraffin-embedded human gastric cancer performed on a Leica Bond™ system. After dewaxing and hydration, antigen retrieval was mediated by high pressure in a citrate buffer (pH 6.0). Section was blocked with 10% normal goat serum 30min at RT. Then primary antibody (1% BSA) was incubated at 4°C overnight. The primary is detected by a biotinylated secondary antibody and visualized using an HRP conjugated SP system.