

Product Information

Size:

50ul

Reactivity:

Human

Source:

Rabbit

Isotype:

IgG

Applications:

ELISA, WB, IHC

Recommended dilutions:

ELISA:1:2000-1:10000, WB:1:1000-1:5000,
IHC:1:20-1:200

Protein Background:

Hydrolyzes extracellular nucleotides into membrane permeable nucleosides. Exhibits AMP-, NAD-, and NMN-nucleosidase activities.

Gene ID:

NT5E

Uniprot

P21589

Synonyms:

5'-nucleotidase (5'-NT) (EC 3.1.3.5) (Ecto-5'-nucleotidase) (CD antigen CD73), NT5E, NT5 NTE

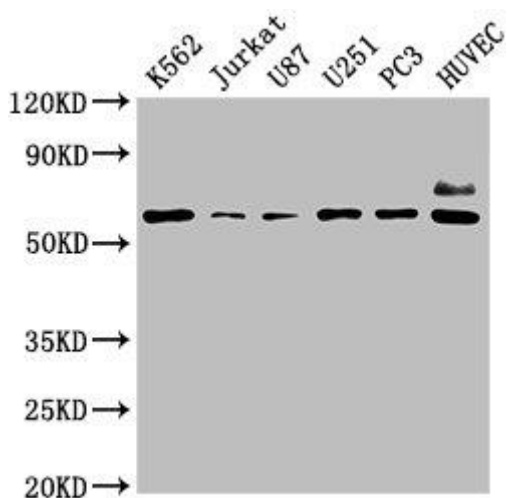
Immunogen:

Recombinant Human 5'-nucleotidase protein (32-264AA).

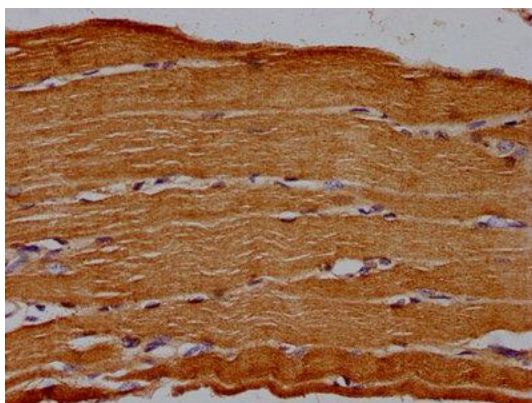
Storage:

Preservative: 0.03% Proclin 300. Constituents: 50% Glycerol, 0.01M PBS, pH 7.4

Product Images



Western Blot. Positive WB detected in: K562 whole cell lysate, Jurkat whole cell lysate, U87 whole cell lysate, U251 whole cell lysate, PC3 whole cell lysate, HUVEC whole cell lysate. All lanes: NT5E antibody at 1:2000. Secondary. Goat polyclonal to rabbit IgG at 1/50000 dilution. Predicted band size: 64, 58 kDa. Observed band size: 64 kDa.



IHC image of PACO62175 diluted at 1:30 and staining in paraffin-embedded human skeletal muscle tissue performed on a Leica Bond™ system. After dewaxing and hydration, antigen retrieval was mediated by high pressure in a citrate buffer (pH 6.0). Section was blocked with 10% normal goat serum 30min at RT. Then primary antibody (1% BSA) was incubated at 4°C overnight. The primary is detected by a biotinylated secondary antibody and visualized using an HRP conjugated SP system.