

Product Information

Size:

50ul

Reactivity:

Human

Source:

Rabbit

Isotype:

IgG

Applications:

ELISA, IF

Recommended dilutions:

ELISA:1:2000-1:10000, IF:1:50-1:200

Protein Background:

Stabilizes microtubules and may regulate actin fiber dynamics through the activation of Rho family GTPases. May also function in Wnt signaling by promoting the rapid degradation of CTNNB1.

Gene ID:

APC2

Uniprot

O95996

Synonyms:

Adenomatous polyposis coli protein 2 (Adenomatous polyposis coli protein-like) (APC-like), APC2, APCL

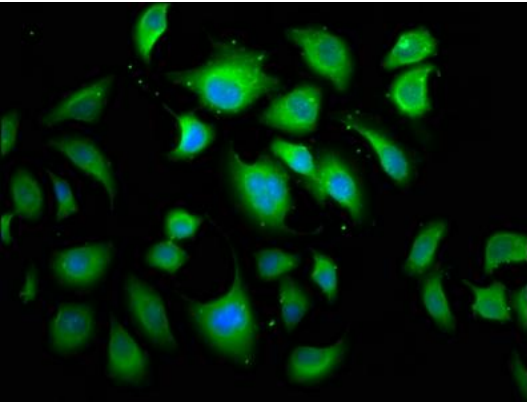
Immunogen:

Recombinant Human Adenomatous polyposis coli protein 2 protein (2011-2221AA).

Storage:

Preservative: 0.03% Proclin 300. Constituents: 50% Glycerol, 0.01M PBS, pH 7.4

Product Images



Immunofluorescence staining of A549 cells with PACO62235 at 1:166, counter-stained with DAPI. The cells were fixed in 4% formaldehyde, permeabilized using 0.2% Triton X-100 and blocked in 10% normal Goat Serum. The cells were then incubated with the antibody overnight at 4°C. The secondary antibody was Alexa Fluor 488-conjugated AffiniPure Goat Anti-Rabbit IgG(H+L).