

# ATP2C2 Antibody



PACO62239

---

## Product Information

**Size:**

50ul

**Reactivity:**

Human

**Source:**

Rabbit

**Isotype:**

IgG

**Applications:**

ELISA, IF

**Recommended dilutions:**

ELISA:1:2000-1:10000, IF:1:50-1:200

**Protein Background:**

This magnesium-dependent enzyme catalyzes the hydrolysis of ATP coupled with the transport of calcium.

**Gene ID:**

ATP2C2

**Uniprot**

O75185

**Synonyms:**

Calcium-transporting ATPase type 2C member 2 (ATPase 2C2) (EC 3.6.3.8) (Secretory pathway Ca(2+)-ATPase 2), ATP2C2, KIAA0703 SPCA2

**Immunogen:**

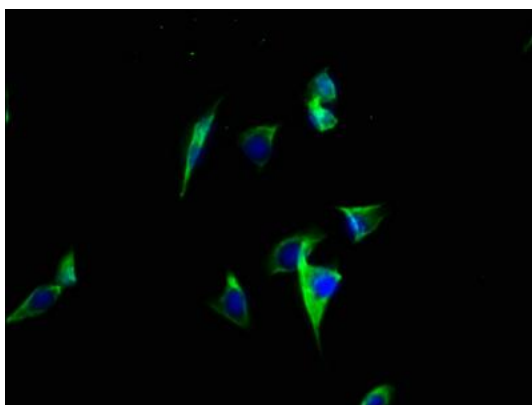
Recombinant Human Calcium-transporting ATPase type 2C member 2 protein (621-702AA).

**Storage:**

Preservative: 0.03% Proclin 300. Constituents: 50% Glycerol, 0.01M PBS, pH 7.4

## Product Images

---



Immunofluorescence staining of A549 cells with PACO62239 at 1:100, counter-stained with DAPI. The cells were fixed in 4% formaldehyde, permeabilized using 0.2% Triton X-100 and blocked in 10% normal Goat Serum. The cells were then incubated with the antibody overnight at 4°C. The secondary antibody was Alexa Fluor 488-conjugated AffiniPure Goat Anti-Rabbit IgG(H+L).