

B2m Antibody



PACO62243

Product Information

Size:

50ul

Reactivity:

Mouse

Source:

Rabbit

Isotype:

IgG

Applications:

ELISA, WB, IHC

Recommended dilutions:

ELISA:1:2000-1:10000, WB:1:1000-1:5000,
IHC:1:200-1:500

Protein Background:

Component of the class I major histocompatibility complex (MHC). Involved in the presentation of peptide antigens to the immune system.

Gene ID:

B2m

Uniprot

P01887

Synonyms:

Beta-2-microglobulin, B2m

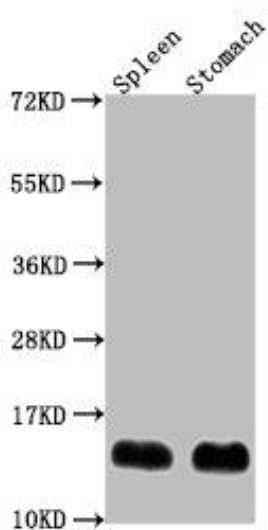
Immunogen:

Recombinant Mouse Beta-2-microglobulin protein (21-119AA).

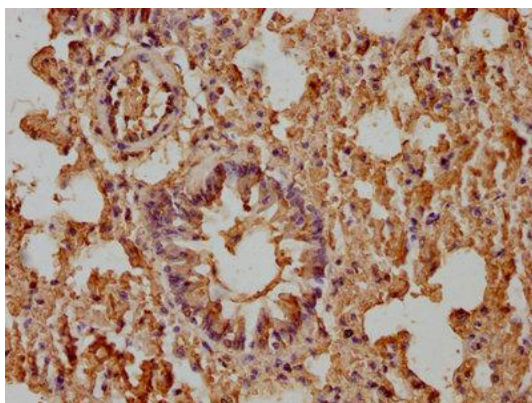
Storage:

Preservative: 0.03% Proclin 300. Constituents: 50% Glycerol, 0.01M PBS, pH 7.4

Product Images



Western Blot. Positive WB detected in: Mouse spleen tissue, Mouse stomach tissue. All lanes: B2m antibody at 1:2000. Secondary. Goat polyclonal to rabbit IgG at 1/50000 dilution. Predicted band size: 14 kDa. Observed band size: 14 kDa.



IHC image of PACO62243 diluted at 1:400 and staining in paraffin-embedded mouse lung tissue performed on a Leica Bond™ system. After dewaxing and hydration, antigen retrieval was mediated by high pressure in a citrate buffer (pH 6.0). Section was blocked with 10% normal goat serum 30min at RT. Then primary antibody (1% BSA) was incubated at 4°C overnight. The primary is detected by a biotinylated secondary antibody and visualized using an HRP conjugated SP system.