

# MEF2A Antibody



PACO62323

---

## Product Information

**Size:**

50ul

**Reactivity:**

Human

**Source:**

Rabbit

**Isotype:**

IgG

**Applications:**

ELISA, WB

**Recommended dilutions:**

ELISA:1:2000-1:10000, WB:1:100-1:1000

**Protein Background:**

Transcriptional activator which binds specifically to the MEF2 element, 5'-YTA[AT](4)TAR-3', found in numerous muscle-specific genes. Also involved in the activation of numerous growth factor- and stress-induced genes. Mediates cellular functions not only in skeletal and cardiac muscle development, but also in neuronal differentiation and survival. Plays diverse roles in the control of cell growth, survival and apoptosis via p38 MAPK signaling in muscle-specific and/or growth factor-related transcription. In cerebellar granule neurons, phosphorylated and sumoylated MEF2A represses transcription of NUR77 promoting synaptic differentiation. Associates with chromatin to the ZNF16 promoter.

**Gene ID:**

MEF2A

**Uniprot**

Q02078

**Synonyms:**

Myocyte-specific enhancer factor 2A (Serum response factor-like protein 1), MEF2A, MEF2

**Immunogen:**

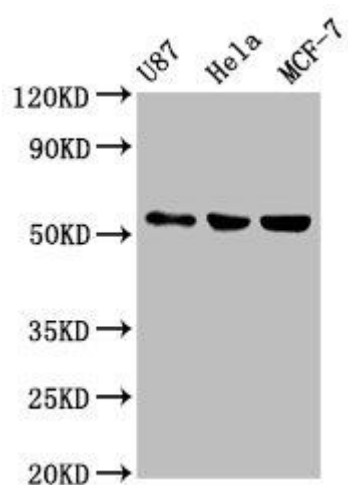
Recombinant Human Myocyte-specific enhancer factor 2A protein (72-226AA).

**Storage:**

Preservative: 0.03% Proclin 300. Constituents: 50% Glycerol, 0.01M PBS, pH 7.4

## Product Images

---



Western Blot. Positive WB detected in: U87 whole cell lysate, HeLa whole cell lysate, MCF-7 whole cell lysate. All lanes: MEF2A antibody at 1:500. Secondary. Goat polyclonal to rabbit IgG at 1/50000 dilution. Predicted band size: 55, 54, 47, 46 kDa. Observed band size: 55 kDa.