

PACO62427

Product Information

Size:

50ul

Reactivity:

Escherichia coli

Source:

Rabbit

Isotype:

IgG

Applications:

ELISA, WB

Recommended dilutions:

ELISA:1:2000-1:10000, WB:1:1000-1:5000

Protein Background:

Catalyzes the phosphorylation of pyruvate to phosphoenolpyruvate.

Gene ID:

ppsA

Uniprot

P23538

Synonyms:

Phosphoenolpyruvate synthase (PEP synthase) (EC 2.7.9.2) (Pyruvate, water dikinase), ppsA, pps

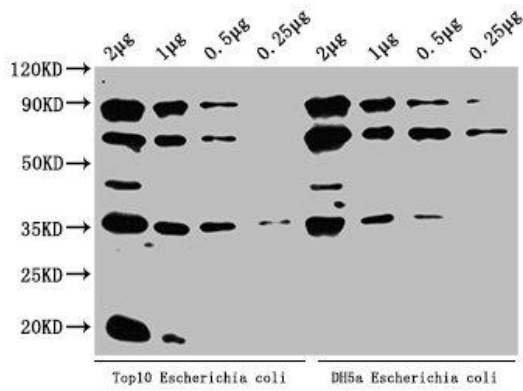
Immunogen:

Recombinant Escherichia coli Phosphoenolpyruvate synthase protein (2-792AA).

Storage:

Preservative: 0.03% Proclin 300. Constituents: 50% Glycerol, 0.01M PBS, pH 7.4

Product Images



Western Blot. Positive WB detected in: Top10 Escherichia coli lysate, DH5alpha Escherichia coli lysate. All lanes: ppsA antibody at 1:2000. Secondary. Goat polyclonal to rabbit IgG at 1/50000 dilution. Predicted band size: 88 kDa. Observed band size: 88 kDa.