
Product Information

Size:

50ul

Reactivity:

Human

Source:

Rabbit

Isotype:

IgG

Applications:

ELISA, IHC

Recommended dilutions:

ELISA:1:2000-1:10000, IHC:1:200-1:500

Protein Background:

May recognize and hydrolyze the peptide bond at the C-terminal Gly of ubiquitin. Involved in the processing of poly-ubiquitin precursors as well as that of ubiquitinated proteins.

Gene ID:

USP31

Uniprot

Q70CQ4

Synonyms:

Ubiquitin carboxyl-terminal hydrolase 31 (EC 3.4.19.12) (Deubiquitinating enzyme 31) (Ubiquitin thioesterase 31) (Ubiquitin-specific-processing protease 31), USP31, KIAA1203

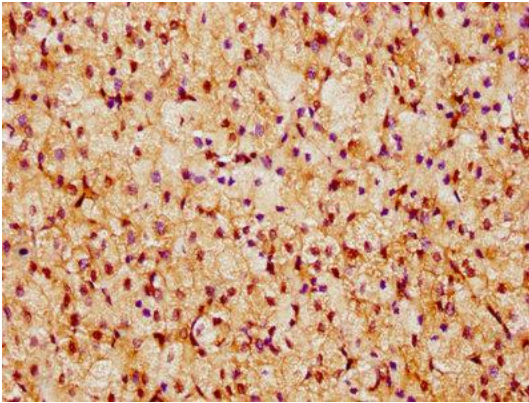
Immunogen:

Recombinant Human Ubiquitin carboxyl-terminal hydrolase 31 protein (1069-1196AA).

Storage:

Preservative: 0.03% Proclin 300. Constituents: 50% Glycerol, 0.01M PBS, pH 7.4

Product Images



IHC image of PACO62495 diluted at 1:300 and staining in paraffin-embedded human adrenal gland tissue performed on a Leica Bond™ system. After dewaxing and hydration, antigen retrieval was mediated by high pressure in a citrate buffer (pH 6.0). Section was blocked with 10% normal goat serum 30min at RT. Then primary antibody (1% BSA) was incubated at 4°C overnight. The primary is detected by a biotinylated secondary antibody and visualized using an HRP conjugated SP system.