

PKN3 Antibody



PACO62763

Product Information

Size:

50ul

Reactivity:

Human

Source:

Rabbit

Isotype:

IgG

Applications:

ELISA, WB, IHC

Recommended dilutions:

ELISA:1:2000-1:10000, WB:1:1000-1:5000,
IHC:1:200-1:500

Protein Background:

Contributes to invasiveness in malignant prostate cancer.

Gene ID:

PKN3

Uniprot

Q6P5Z2

Synonyms:

Serine/threonine-protein kinase N3 (EC 2.7.11.13) (Protein kinase PKN-beta) (Protein-kinase C-related kinase 3), PKN3, PKNBETA

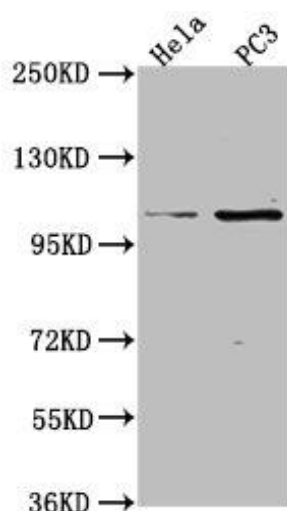
Immunogen:

Recombinant Human Serine/threonine-protein kinase N3 protein (1-252AA).

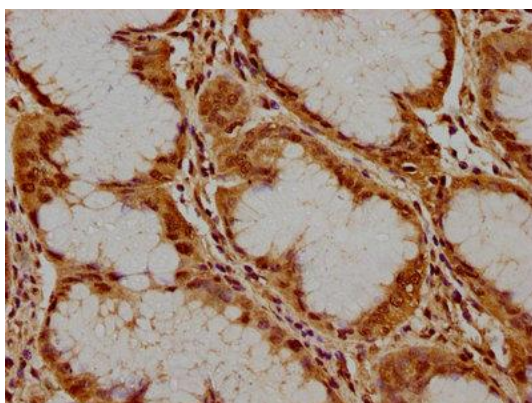
Storage:

Preservative: 0.03% Proclin 300. Constituents: 50% Glycerol, 0.01M PBS, pH 7.4

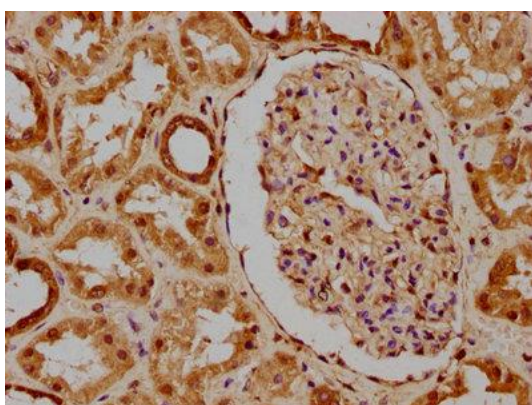
Product Images



Western Blot. Positive WB detected in: Hela whole cell lysate, PC3 whole cell lysate. All lanes: PKN3 antibody at 1:2000. Secondary: Goat polyclonal to rabbit IgG at 1/50000 dilution. Predicted band size: 100 kDa. Observed band size: 100 kDa.



IHC image of PACO62763 diluted at 1:300 and staining in paraffin-embedded human stomach cancer performed on a Leica BondTM system. After dewaxing and hydration, antigen retrieval was mediated by high pressure in a citrate buffer (pH 6.0). Section was blocked with 10% normal goat serum 30min at RT. Then primary antibody (1% BSA) was incubated at 4°C overnight. The primary is detected by a biotinylated secondary antibody and visualized using an HRP conjugated SP system.



IHC image of PACO62763 diluted at 1:300 and staining in paraffin-embedded human kidney tissue performed on a Leica BondTM system. After dewaxing and hydration, antigen retrieval was mediated by high pressure in a citrate buffer (pH 6.0). Section was blocked with 10% normal goat serum 30min at RT. Then primary antibody (1% BSA) was incubated at 4°C overnight. The primary is detected by a biotinylated secondary antibody and visualized using an HRP conjugated SP system.