

Product Information

Size:

50ul

Reactivity:

Human

Source:

Rabbit

Isotype:

IgG

Applications:

ELISA, IHC

Recommended dilutions:

ELISA:1:2000-1:10000, IHC:1:200-1:500

Protein Background:

Component of the IFT complex A (IFT-A), a complex required for retrograde ciliary transport. Required for ciliogenesis. May promote CASP3 activation and TNF-stimulated apoptosis.

Gene ID:

WDR35

Uniprot

Q9P2L0

Synonyms:

WD repeat-containing protein 35 (Intraflagellar transport protein 121 homolog), WDR35, IFT121 KIAA1336

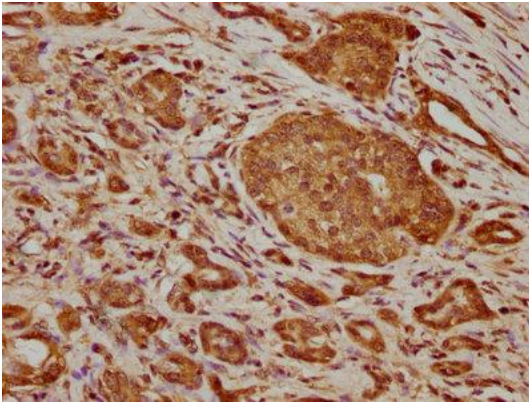
Immunogen:

Recombinant Human WD repeat-containing protein 35 protein (954-1181AA).

Storage:

Preservative: 0.03% Proclin 300. Constituents: 50% Glycerol, 0.01M PBS, pH 7.4

Product Images



IHC image of PACO62819 diluted at 1:200 and staining in paraffin-embedded human pancreatic cancer performed on a Leica Bond™ system. After dewaxing and hydration, antigen retrieval was mediated by high pressure in a citrate buffer (pH 6.0). Section was blocked with 10% normal goat serum 30min at RT. Then primary antibody (1% BSA) was incubated at 4°C overnight. The primary is detected by a biotinylated secondary antibody and visualized using an HRP conjugated SP system.