

PACO62971

---

## Product Information

**Size:**

50ul

**Reactivity:**

Human

**Source:**

Rabbit

**Isotype:**

IgG

**Applications:**

ELISA, WB, IP

**Recommended dilutions:**

ELISA:1:2000-1:10000, WB:1:1000-1:5000,  
IP:1:200-1:2000

**Protein Background:**

Potential tumor suppressor. Acts as a KRAS-specific effector protein. May promote apoptosis and cell cycle arrest. Stabilizes STK3/MST2 by protecting it from proteasomal degradation.

**Gene ID:**

RASSF2

**Uniprot**

P50749

**Synonyms:**

Ras association domain-containing protein 2, RASSF2, CENP-34 KIAA0168

**Immunogen:**

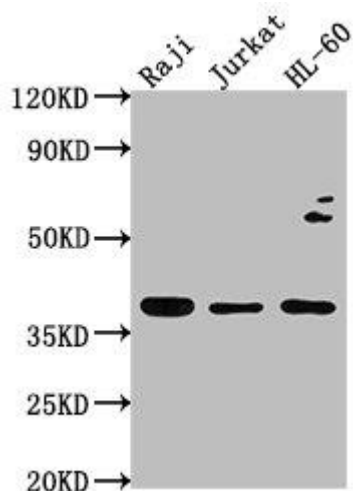
Recombinant Human Ras association domain-containing protein 2 protein (69-326AA).

**Storage:**

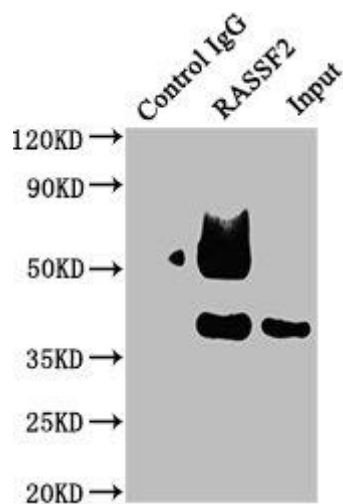
Preservative: 0.03% Proclin 300. Constituents: 50% Glycerol, 0.01M PBS, pH 7.4

## Product Images

---



Western Blot. Positive WB detected in: Raji whole cell lysate, Jurkat whole cell lysate, HL-60 whole cell lysate. All lanes: RASSF2 antibody at 1:2000. Secondary. Goat polyclonal to rabbit IgG at 1/50000 dilution. Predicted band size: 38, 18 kDa. Observed band size: 38 kDa.



Immunoprecipitating RASSF2 in Raji whole cell lysate. Lane 1: Rabbit control IgG instead of PACO62971 in Raji whole cell lysate. For western blotting, a HRP-conjugated Protein G antibody was used as the secondary antibody (1/50000). Lane 2: PACO62971 (5 $\mu$ g) + Raji whole cell lysate (0.5mg). Lane 3: Raji whole cell lysate (20 $\mu$ g).