

### Product Information

**Size:**

50ul

**Reactivity:**

Human

**Source:**

Rabbit

**Isotype:**

IgG

**Applications:**

ELISA, WB, IF

**Recommended dilutions:**

ELISA:1:2000-1:10000, WB:1:500-1:2000,  
IF:1:50-1:200

**Protein Background:**

Binding to cells via a high affinity receptor, laminin is thought to mediate the attachment, migration and organization of cells into tissues during embryonic development by interacting with other extracellular matrix components.

**Gene ID:**

LAMA4

**Uniprot**

Q16363

**Synonyms:**

Laminin subunit alpha-4 (Laminin-14 subunit alpha) (Laminin-8 subunit alpha) (Laminin-9 subunit alpha), LAMA4

**Immunogen:**

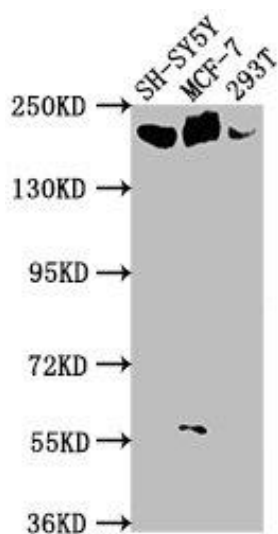
Recombinant Human Laminin subunit alpha-4 protein (1593-1823AA).

**Storage:**

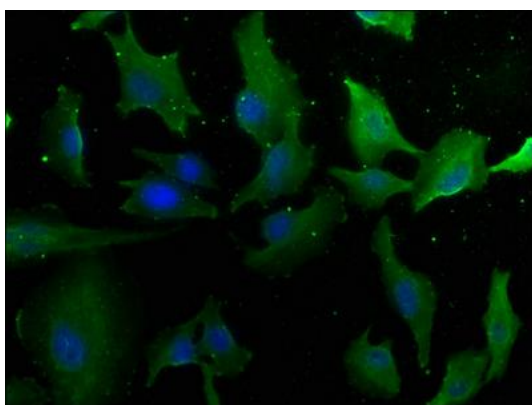
Preservative: 0.03% Proclin 300. Constituents: 50% Glycerol, 0.01M PBS, pH 7.4

## Product Images

---



Western Blot. Positive WB detected in: SH-SY5Y whole cell lysate, MCF-7 whole cell lysate, 293T whole cell lysate. All lanes: LAMA4 antibody at 1:1000. Secondary. Goat polyclonal to rabbit IgG at 1/50000 dilution. Predicted band size: 203, 202, 13 kDa. Observed band size: 203 kDa.



Immunofluorescence staining of U251 cells with PACO63083 at 1:50, counter-stained with DAPI. The cells were fixed in 4% formaldehyde, permeabilized using 0.2% Triton X-100 and blocked in 10% normal Goat Serum. The cells were then incubated with the antibody overnight at 4°C. The secondary antibody was Alexa Fluor 488-conjugated AffiniPure Goat Anti-Rabbit IgG(H+L).