

PACO63127

---

## Product Information

**Size:**

50ul

**Reactivity:**

Human

**Source:**

Rabbit

**Isotype:**

IgG

**Applications:**

ELISA, IHC

**Recommended dilutions:**

ELISA:1:2000-1:10000, IHC:1:20-1:200

**Protein Background:**

Binds mannose, N-acetylglucosamine (GlcNAc) and fucose, but not galactose, in a Ca(2+)-dependent manner, in vitro.

**Gene ID:**

CLEC4G

**Uniprot**

Q6UXB4

**Synonyms:**

C-type lectin domain family 4 member G (Liver and lymph node sinusoidal endothelial cell C-type lectin) (LSEctin), CLEC4G

**Immunogen:**

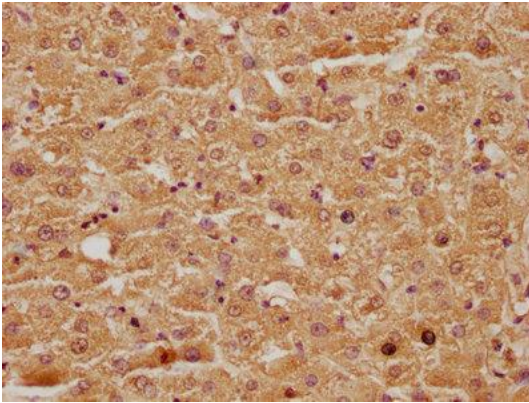
Recombinant Human C-type lectin domain family 4 member G protein (66-293AA).

**Storage:**

Preservative: 0.03% Proclin 300. Constituents: 50% Glycerol, 0.01M PBS, pH 7.4

## Product Images

---



IHC image of PACO63127 diluted at 1:100 and staining in paraffin-embedded human liver tissue performed on a Leica Bond™ system. After dewaxing and hydration, antigen retrieval was mediated by high pressure in a citrate buffer (pH 6.0). Section was blocked with 10% normal goat serum 30min at RT. Then primary antibody (1% BSA) was incubated at 4°C overnight. The primary is detected by a biotinylated secondary antibody and visualized using an HRP conjugated SP system.