

CTHRC1 Antibody



PACO63159

Product Information

Size:

50ul

Reactivity:

Human

Source:

Rabbit

Isotype:

IgG

Applications:

ELISA, IHC

Recommended dilutions:

ELISA:1:2000-1:10000, IHC:1:200-1:500

Protein Background:

May act as a negative regulator of collagen matrix deposition.

Gene ID:

CTHRC1

Uniprot

Q96CG8

Synonyms:

Collagen triple helix repeat-containing protein 1 (Protein NMTC1), CTHRC1

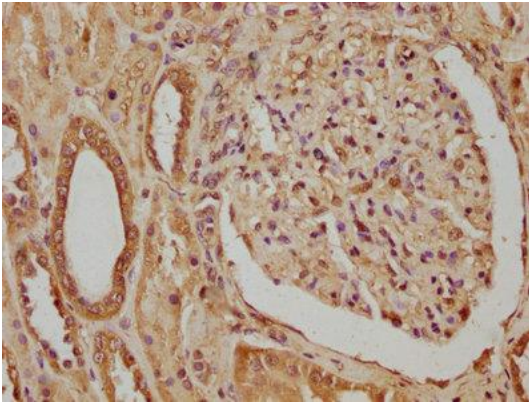
Immunogen:

Recombinant Human Collagen triple helix repeat-containing protein 1 protein (31-243AA).

Storage:

Preservative: 0.03% Proclin 300. Constituents: 50% Glycerol, 0.01M PBS, pH 7.4

Product Images



IHC image of PACO63159 diluted at 1:320 and staining in paraffin-embedded human kidney tissue performed on a Leica Bond™ system. After dewaxing and hydration, antigen retrieval was mediated by high pressure in a citrate buffer (pH 6.0). Section was blocked with 10% normal goat serum 30min at RT. Then primary antibody (1% BSA) was incubated at 4°C overnight. The primary is detected by a biotinylated secondary antibody and visualized using an HRP conjugated SP system.