

TMEM237 Antibody



PACO63167

Product Information

Size:

50ul

Reactivity:

Human

Source:

Rabbit

Isotype:

IgG

Applications:

ELISA, WB

Recommended dilutions:

ELISA:1:2000-1:10000, WB:1:1000-1:5000

Protein Background:

Component of the transition zone in primary cilia. Required for ciliogenesis.

Gene ID:

TMEM237

Uniprot

Q96Q45

Synonyms:

Transmembrane protein 237 (Amyotrophic lateral sclerosis 2 chromosomal region candidate gene 4 protein), TMEM237, ALS2CR4

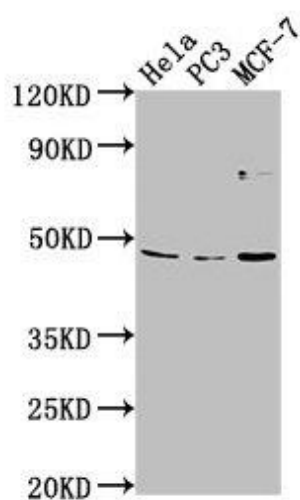
Immunogen:

Peptide sequence from Human Transmembrane protein 237 protein (59-78AA).

Storage:

Preservative: 0.03% Proclin 300. Constituents: 50% Glycerol, 0.01M PBS, pH 7.4

Product Images



Western Blot. Positive WB detected in: HeLa whole cell lysate, PC-3 whole cell lysate, MCF-7 whole cell lysate. All lanes: TMEM237 antibody at 1:2000. Secondary. Goat polyclonal to rabbit IgG at 1/50000 dilution. Predicted band size: 46, 45, 49, 36, 47 kDa. Observed band size: 46 kDa.